

## Culture of Rat Olfactory Ensheathing Cells Using EasySep<sup>®</sup> Magnetic Nanoparticle Separation

Susan Louise Lindsay and Susan Carol Barnett\*

Glial Cell Biology Group, Institute of Infection, Immunity and Inflammation, University of Glasgow, Glasgow, UK

\*For correspondence: [susan.barnett@glasgow.ac.uk](mailto:susan.barnett@glasgow.ac.uk)

**[Abstract]** Olfactory ensheathing cells (OECs) can be isolated and purified from a range of postnatal day 7-day to 10-day rat olfactory bulbs. Rat OECs express the CD271/p75<sup>NTR</sup> receptor and using the “Do-It-Yourself” magnetic nanoparticle EasySep kit from STEMCELL technologies this protocol allows the selective purification of these cells in less than 50 min. Similar procedure can be used for mouse cultures.

### **Materials and Reagents**

1. EasySep<sup>®</sup> "Do-It-Yourself" Selection Kit (STEMCELL Technologies, catalog number: 18098)
2. Mouse IgG1 P75<sup>NTR</sup> antibody (Abcam, catalog number: ab8877)
3. 2% Fetal bovine serum (FBS) (Sigma-Aldrich, catalog number: F4135) in PBS (2 ml in 98 ml of PBS, 10 mM)
4. Phosphate buffered saline (PBS) (Life Technologies, catalog number: 00-3002)
5. Dissolve tablets in 100 ml of distilled H<sub>2</sub>O, The buffer contains 10 mM phosphate, 150 mM sodium chloride (pH 7.3-7.5)
6. 10x Trypsin solution (Life Technologies, Invitrogen<sup>™</sup>, catalog number: 15090046)
7. Low-glucose DMEM (Life Technologies, Invitrogen<sup>™</sup>, catalog number: 21885025)
8. 5% v/v FBS (Sigma-Aldrich, catalog number: F4135)
9. 2 mM L-glutamine (Life Technologies, Invitrogen<sup>™</sup>, catalog number: 25030024)
10. Bovine serum albumin Pathocyte (MP Biomedicals, catalog number: 810111)
11. Bovine pancreatic insulin (Sigma-Aldrich, catalog number: I-5500)
12. Human transferrin (Sigma-Aldrich, catalog number: T-2252)
13. Progesterone (Sigma-Aldrich, catalog number: P-0130)
14. Putrescine (Sigma-Aldrich, catalog number: P7505)
15. L-thyroxine (Sigma-Aldrich, catalog number: T-2501)
16. Selenium (Sigma-Aldrich, catalog number: S-1382)
17. 3,3',5-triiodo-L-thyronine (Sigma-Aldrich, catalog number: T-2752)

18. FGF2 (25 ng/ml) (Peprotech, catalog number: 100-18B)
19. Heregulin  $\beta$ -1 (50 ng/ml) (R&D Systems, catalog number: 396-HB-050)
20. Forskolin ( $5 \times 10^{-7}$  M) (Sigma-Aldrich, catalog number: F6886)
21. Gentamicin solution (50 mg/ml use at 1 ml/L) (Sigma-Aldrich, catalog number: G1397)
22. L15 media (Leibovitz medium) (Sigma-Aldrich, catalog number: L1518)
23. 1.33% collagenase (MP Biomedicals UK, catalog number: 195109 Type I)
24. Bovine pancreas DNase (Sigma-Aldrich, catalog number: D4263)
25. Bovine serum albumin fraction v (Sigma-Aldrich, catalog number: A2153)
26. Astrocyte-conditioned media (ACM; use at 1:5) ACM is fresh serum-free media (DMEM-BS) collected from a confluent astrocyte monolayer for 48 h (noble and Murray, 1984; Alexander *et al.*, 2002)
27. Poly-L-Lysine (Sigma-Aldrich, catalog number: P1274)
28. 70% ethanol
29. 10% v/v serum free DMEM-Bottenstein and Sato (DMEM-BS) (see Recipes)
30. 10% v/v serum free DMEM-Bottenstein and Sato (DMEM-BS) (Bottenstein *et al.*, 1979) (see Recipes)

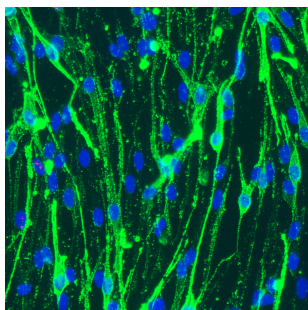
## **Equipment**

1. EasySep<sup>®</sup> Magnet Catalog (STEMCELL technologies, catalog number: 18000)
2. FACS tubes 5 ml Polystyrene Round-Bottom Tubes (BD Biosciences, catalog number: 352058)
3. 50 ml centrifuge tubes (BD Biosciences, catalog number: 352070)
4. 40  $\mu$ m cell strainers (BD Biosciences, catalog number: 352340)
5. 1.5 ml polypropylene microcentrifuge tube (Greiner Bio-One GmbH, catalog number: 616201)
6. Poly-L-lysine coated (13.3  $\mu$ g/ml, MW-100,000) (Sigma-Aldrich, catalog number: P1274), T25 cm<sup>2</sup> tissue culture flasks (Greiner Bio-One GmbH, catalog number: 690175)
7. Nunc sterile centrifuge tube (Thermo Fisher Scientific, catalog number: 339651)
8. 25 cm<sup>2</sup> flask (Greiner Bio-One GmbH, catalog number: 690160)
9. 40  $\mu$ m cell strainer (BD Biosciences, Falcon<sup>®</sup>, catalog number: 352340)
10. 37 °C incubator
31. Plastic bijou bottle (Thermo Fisher Scientific, Sterilin<sup>®</sup>, catalog number: 129A)
32. 21 gauge needle (BD Biosciences, catalog number: 305167)
33. 23 G needle (BD Biosciences, catalog number: 305143)

## **Procedure**

1. Coating tissue culture flask with PLL  
Make up 4 mg/ml of poly-L-Lysine (MW ~100,000, PLL) in ddH<sub>2</sub>O (e.g. dilute 25 mg in 6.25 ml), filter sterilise using 0.22 µm filter and store at -20 °C. For use dilute 1:300 in dH<sub>2</sub>O (final conc. 13.3 µg/ml).
2. Follow the protocol provided with the EasySep® "Do-It-Yourself" Selection Kit to make up the positive selection antibody cocktail. Briefly, add 15 µg (15 µl) of mouse IgG1 P75<sup>NTR</sup> to a 1.5 ml microcentrifuge tube. Add 100 µl of component A (supplied in the kit) to the vial and mix well. Add 100 µl of component B (supplied in the kit) to the vial and mix well. Tightly cap the vial and place it into a humidified 37 °C incubator in 7% CO<sub>2</sub> overnight. The following day bring the vial to a final volume of 1.0 ml by adding 985 µl PBS. The positive selection antibody cocktail is now ready for use.
3. Dissect out the olfactory bulbs from postnatal rat pups by first decapitating the pups under Home Office License. Pin the head dorsal-side up onto a dissecting board and spray with 70% ethanol. Using sterile instruments remove the skin from the head using curved scissors and make a large circular cut to remove the skull to reveal the brain and the two olfactory bulbs at the nose tip. Using curved forceps gently remove the olfactory bulbs. Enzymatically digest the bulbs in 1.33% collagenase (MP Biomedicals UK, 195109 Type I) in 500 µl of L15 media (Leibovitz medium) containing 50 µg/ml gentamicin in a 7 ml plastic bijou bottle. The tissue mix is placed in a humidified 37 °C incubator in 7% CO<sub>2</sub> for 15 min to aid dissociation. After dissociation DNase (500 U/ml stock containing 0.04 mg/ml bovine pancreas DNase and 3.0 mg/ml bovine serum albumin fraction v diluted in L15 is added to prevent cell clumping and the tissue is dissociated by passing gently and slowly through syringes carrying a 21 gauge needle first followed by a 23G needle. The cell suspension is transferred to a 15 ml Nunc sterile centrifuge tube and spin at 1,200 rpm (~480 x g) for 5 min and plate cells in OEC media in a 25 cm<sup>2</sup> flask, and replace half the medium twice a week. After 1 week in culture remove cells off the flask using trypsin. First wash the monolayer with 2.0 ml of PBS, remove and then add 1 ml of PBS containing 100 µl of trypsin (10x) and allow the cells to detach for 1-2 min in the incubator. Add 1 ml of 2% FBS to neutralise the trypsin, spin down cells to generate an unpurified mixed of olfactory bulb cells (Higginson and Barnett, 2011).
4. Using 5 ml 2% FBS, wash detached cells through a 40 µm cell strainer and centrifuge at 1,200 rpm for 5 min.
5. Resuspend cell pellet in 100 µl 2% FBS and transfer them to a 5 ml FACS tube.
6. Add 10 µl of the positive selection cocktail that has been assembled in step 1 to the cell suspension. Mix well and incubate at room temperature for 15 min.

7. Mix EasySep® Magnetic Nanoparticles to ensure that they are in a uniform suspension by pipetting up and down at least 5 times. Vortexing is not recommended. Add 5 µl of the magnetic nanoparticles and mix well. Incubate at room temperature for 10 min.
8. Bring cell suspension to a total volume of 2.5 ml by adding 2% FBS. Mix the cells in the tube by gently pipetting up and down 2-3 times. Place the tube (without cap) into the EasySep® magnet. Set aside for 5 min.
9. Pick up the magnet and in one continuous motion, invert the magnet and tube, pouring off the supernatant fraction. The magnetically labelled cells will remain inside the tube, held by the magnetic field. Leave the magnet and tube inverted for 2-3 sec then return to upright position. Do not shake or blot off any drops that may remain hanging from the mouth of the tube.
10. Remove the tube from the magnet and add 2.5 ml of 2% FBS. Mix the cell suspension by gently pipetting up and down 2-3 times. Place the tube back in the magnet and set aside for a further 5 min.
11. Repeat steps 7 to 9 once more, for a total of four 5 min separations in the magnet.
12. Remove tube from magnet and resuspend cells in 3 ml OEC medium.
13. Centrifuge the FACS tube containing the cells for 1,200 rpm (~480 x g) for 5 min to pellet the now purified OECs.
14. Resuspend pellet in 50 µl of fresh OEC media and plate in a strip in a PLL coated T25 cm<sup>2</sup> tissue culture flask. Allow cells to attach for 15 min at 37 °C. Cells are plated in a small strip to allow cells to attach to the flask in a high density which promotes viability.
15. Flood flask with 3 ml OEC media and incubate at 37 °C, 7% CO<sub>2</sub>. We use 7% CO<sub>2</sub> as this was a general protocol for all glial cells when the original purification of OECs was carried out in Prof Mark Noble's lab (Barnett *et al.*, 1993).
16. After 7 days the strip of cells will be confluent and OECs can be harvested by standard trypsinisation and bulked up for further use.
17. Using this system OECs will be at least 98-99% pure of any contaminating fibroblasts or other cells (see below image, Figure 1).



**Figure 1. Image of P75<sup>NTR</sup> (green) positive OECs (blue DAPI to visualise nuclei)**

## **Recipes**

1. 10% v/v serum free DMEM-Bottenstein and Sato (DMEM-BS) (Bottenstein *et al.*, 1979)  
Made by combining DMEM-45 g/L glucose, and supplemented with:  
25 µg/ml gentamicin  
0.0286% bovine serum albumin Pathocyte  
0.5 µg/ml bovine pancreatic insulin  
100 µg/ml human transferrin  
0.2 µM progesterone  
0.10 µM putrescine  
0.45 µM l-thyroxine  
0.224 µM selenium  
0.49 µM 3', 3', 5' -triiodo-l-thyronine

## **Acknowledgments**

The protocol was adapted from Franceschini and Barnett (1996) and Higginson and Barnett (2011). The work was funded by the MRC.

## **References**

1. Alexander, C. L., Fitzgerald, U. F. and Barnett, S. C. (2002). [Identification of growth factors that promote long-term proliferation of olfactory ensheathing cells and modulate their antigenic phenotype](#). *Glia* 37(4): 349-364.
2. Barnett, S. C., Hutchins, A. M. and Noble, M. (1993). [Purification of olfactory nerve ensheathing cells from the olfactory bulb](#). *Dev Biol* 155(2): 337-350.
3. Bottenstein, J. E. and Sato, G. H. (1979). [Growth of a rat neuroblastoma cell line in serum-free supplemented medium](#). *Proc Natl Acad Sci U S A* 76(1): 514-517.
4. Franceschini, I. A. and Barnett, S. C. (1996). [Low-affinity NGF-receptor and E-N-CAM expression define two types of olfactory nerve ensheathing cells that share a common lineage](#). *Dev Biol* 173(1): 327-343.
5. Higginson, J. R. and Barnett, S. C. (2011). [The culture of olfactory ensheathing cells \(OECs\)--a distinct glial cell type](#). *Exp Neurol* 229(1): 2-9.
6. Noble, M. and Murray, K. (1984). [Purified astrocytes promote the in vitro division of a bipotential glial progenitor cell](#). *EMBO J* 3(10): 2243-2247.