

## Detection of Intracellular Reactive Oxygen Species (CM-H<sub>2</sub>DCFDA)

Rabii Ameziane-El-Hassani<sup>1</sup> and Corinne Dupuy<sup>2\*</sup>

<sup>1</sup>UBRM, Centre National de l'Energie, des Sciences et des Techniques Nucléaires, Rabat, Morocco; <sup>2</sup>Institut Gustave Roussy, FRE2939 Centre National de la Recherche Scientifique, Villejuif, France

\*For correspondence: [dupuy@igr.fr](mailto:dupuy@igr.fr)

**[Abstract]** Reactive oxygen species (ROS) play a critical role in cellular physiopathology. ROS are implicated in cell proliferation, signaling pathways, oxidative defense mechanisms responsible for killing of bacteria, thyroid hormonesynthesis, etc. The cellular redox homeostasis is balanced by oxidants and antioxidants systems. In several diseases (cancer, neurodegenerative diseases, cardiovascular diseases), the redox balance is disturbed. In fact, excessive amounts of ROS can damage proteins, lipids and DNA at cellular level.

The choice of a sensitive method for detection of intracellular ROS is very important for detecting the disturbed redox balance in pathological cells and after exposition of cells to different genotoxic agents (irradiation, oxidative stress, etc).

The detection of ROS in biological systems is difficult for several reasons: Method sensibility and probe specificity. The 2', 7'-dichlorodihydrofluorescein diacetate (H<sub>2</sub>DCF-DA) fluorescent probe is commonly employed and may react with several ROS including hydrogen peroxide, hydroxyl radicals and peroxynitrite. The cell-permeant H<sub>2</sub>DCFDA passively diffuses into cells and is retained in the intracellular level after cleavage by intracellular esterases. Upon oxidation by ROS, the nonfluorescent H<sub>2</sub>DCFDA is converted to the highly fluorescent 2', 7'-dichlorofluorescein (DCF). The chloromethyl derivative of H<sub>2</sub>DCFDA (CM-H<sub>2</sub>DCFDA) provides much better retention in live cells than H<sub>2</sub>DCFDA. Dead or dying cells produces ROS. When we want to detect ROS in living cells, we have to stain cells by propidium iodide (PI) and evaluate ROS production only in living cells which are PI negative. In fact, PI intercalates into double-stranded nucleic acids. It is excluded by viable cells but can penetrate cell membranes of dying or dead cells. PI is excited at 488 nm and emits at a maximum wavelength of 617 nm. Because of these spectral characteristics, PI can be used in combination with other fluorescent probe such as CM-H<sub>2</sub>DCFDA (excitation/emission: 492–495/517–527 nm).

A probe fluorescence emission can be assessed by flow cytometry, a standard fluorometer or fluorescence microscopy using appropriate filter.

Flow cytometry is commonly employed to detect intracellular ROS production. Flow cytometry measures fluorescence per cell. The cells are excited by the light source and emitted light from cells is converted to electrical pulses by optical detectors. Emitted Light is send to different

detectors by using optical filters: 525 nm Band Pass Filter for FL-1 and 620 nm Band Pass Filter for FL-3. A 525 nm band pass filter (FL-1) placed in the light path prior to the detector will only allow “green” light into the detector. So, FL-1 is used in our protocol to collect green light corresponding to the oxidation of dichlorodihydrofluorescein (DCF) by ROS. FL-1 is the Green (FL-1) channel on flow cytometers. 620nm Band Pass Filter (FL-3) only allow “red” light into the detector. Red fluorescence emission is measured in the Red (FL-3) channel on most flow cytometers.

### **Materials and Reagents**

1. 1x Trypsin-EDTA (0.05% / 0.02% in PBS) (PAA Laboratories GmbH, catalog number: L11-004)
2. DPBS, calcium, magnesium (Life Technologies, Invitrogen™, catalog number: 14040)
3. HBSS Hank's Balanced Salt Solution (HBSS) with Calcium and Magnesium and without Red Phenol (Life Technologies, Invitrogen™, catalog number: 14025)
4. CM-H2DCFDA (Life Technologies, Invitrogen™, catalog number: C6827)
5. Propidium iodide - 1.0 mg/ml (Life Technologies, Invitrogen™, catalog number: P3566)

### **Equipment**

1. Cell incubator
2. Six-well plates
3. Centrifuge
4. FACSVantage SE (Becton Dickinson)
5. 2 x 75 mm, 5 ml polystyrene round bottom test tube (BD Biosciences, catalog number: 352054)

### **Procedure**

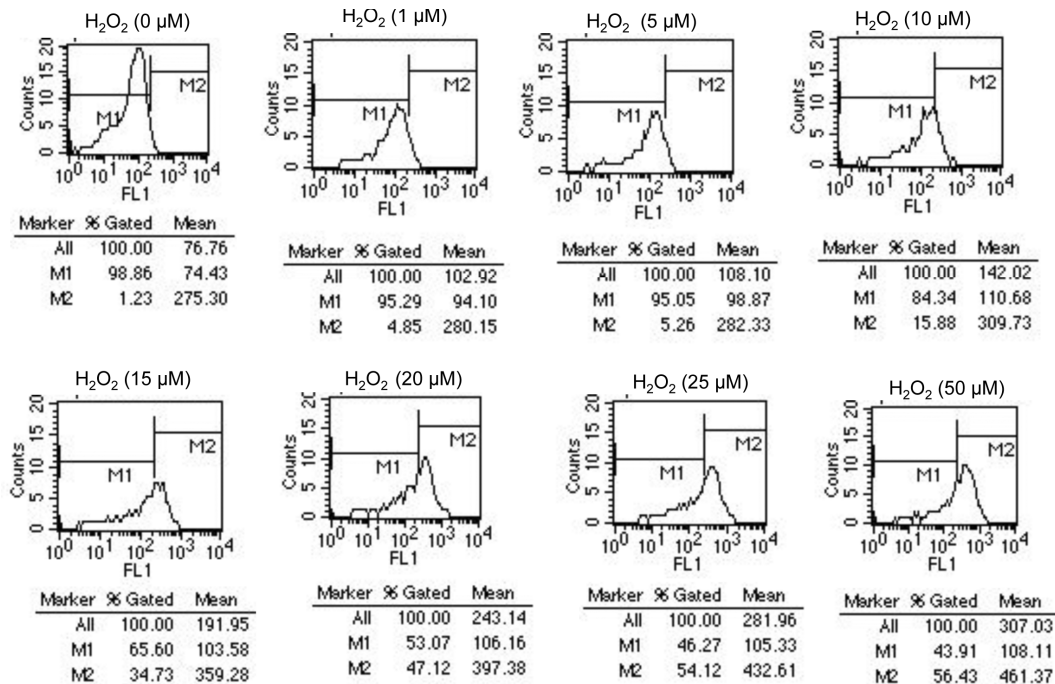
In the protocol described below, we detect the intracellular ROS after exposure of non-cancerous human thyroid epithelial cell line “HTori-3.1” to the oxidative stress. HTori-3.1 cells are grown in complete culture medium (see Recipes).

1. HTori-3.1 cells were plated at a density of  $2.5 \times 10^5$  cells per well into six-well plates in complete culture medium.
2. Sixteen hours later, the cells (90% confluence) were washed by warm DPBS, harvested by trypsinization (250 µl of trypsin / well).

3. Add 1 ml of complete culture medium (10% FCS) to stop trypsinization and resuspend cells by gently pipetting up and down.
4. Collect cells into 5 ml polystyrene round bottom tube by centrifugation (5 min at 200 x g) at room temperature and aspirate supernatant.
5. Wash cell pellet with 4 ml DPBS and centrifuge 5 min at 200 x g at room temperature.
6. Resuspend cell pellet in HBSS with 10  $\mu\text{mol/L}$  of CM-H<sub>2</sub>DCFDA and increased concentration of H<sub>2</sub>O<sub>2</sub> (1 - 5 -10 -15 - 20 - 25 and 50  $\mu\text{mol/L}$ ) by gently pipetting up and down (500  $\mu\text{l}$ /tube).
7. Incubate cells (resuspended in tubes) in cell incubator [(37 °C), high relative humidity (95%), and controlled CO<sub>2</sub> level (5%)] in the dark for 45 min.
8. Add propidium iodide 0.5  $\mu\text{l}$ /0.5 ml/tube (final concentration = 1  $\mu\text{g/ml}$ ) and place the tubes on ice (still in the dark) and proceed immediately to flow cytometry analysis. Note that: a) the propidium iodide staining procedure should be performed immediately before analysis on the flow cytometer, b) when we place tubes on ice we minimize cell activity and we avoid artifactual fluctuations of ROS detection between the first tube analyzed in FACS and following tubes.
9. A total of 5,000 events are analyzed in flow cytometry.
10. The cellular viability is assessed by propidium iodide staining. Collect PI fluorescence in the FL-3 channel (620 nm) of FACSVantage SE (Becton Dickinson).
11. Living cells, which are PI negative, were selected by FACS gating. In these living cells, we record the fluorescence of DCF on FL-1 channel (525 nm) of FACSVantage SE (Becton Dickinson).

## **Analysis**

The effect of H<sub>2</sub>O<sub>2</sub> concentrations from 1 to 50  $\mu\text{mol/L}$  on the intracellular ROS level was determined by flow cytometry analysis (Figure 1). We can present results as the "all mean fluorescence" or as "M2 percentage" fluorescence variation. M2 indicate the percentage of cells with an increase production of ROS. We measured a concentration-dependent increase of fluorescence, reflecting an increased level of intracellular ROS (Figure 1).



For example, after exposure of cells to 20  $\mu\text{M}$   $\text{H}_2\text{O}_2$ , we detect an increase in fluorescence of HTori3.1 cells [mean fluorescence of all cells is 243.14 in stressed cells and 76.76 in no stressed cells (0  $\mu\text{M}$   $\text{H}_2\text{O}_2$ )]. Our results show that the level of ROS in stressed cells is 3 times more than in no stressed cells.

Also, we can analyze results by "M2 and M1 percentage" fluorescence variation. M1 is placed around the no stressed cells. M2 is placed to the right of M1 to designate positive events. We look at the %Gated for M2: 1.23% (no stressed cells) and 47.12% (cells stressed with 20  $\mu\text{M}$   $\text{H}_2\text{O}_2$ ). Our results indicate that 47, 12% of cells show an increase in ROS level after exposure to 20  $\mu\text{M}$   $\text{H}_2\text{O}_2$ .

## Recipes

Complete culture medium: Phenol red-free RPMI 1640 (Life Technologies, Invitrogen™), supplemented with 1% (v/v) antibiotics/antimycotics (Life Technologies, Invitrogen™), 2 mmol/L of L-glutamine (Life Technologies, Invitrogen™), and 10% (v/v) FCS (PAA Laboratories).

## Acknowledgments

This protocol is adapted from Ameziane-EI-Hassani *et al.* (2010).

## References

1. Ameziane-El-Hassani, R., Boufraquech, M., Lagente-Chevallier, O., Weyemi, U., Talbot, M., Metivier, D., Courtin, F., Bidart, J. M., El Mzibri, M., Schlumberger, M. and Dupuy, C. (2010). [Role of H<sub>2</sub>O<sub>2</sub> in RET/PTC1 chromosomal rearrangement produced by ionizing radiation in human thyroid cells.](#) *Cancer Res* 70(10): 4123-4132.