

## Preparation and Purification of Proteins Secreted from *Phytophthora sojae*

Yeqiang Xia, Yan Wang and Yuanchao Wang\*

Department of Plant Pathology, Nanjing Agriculture University, Nanjing, China

\*For correspondence: [wangyc@njau.edu.cn](mailto:wangyc@njau.edu.cn)

**[Abstract]** *Phytophthora sojae*, the causal agent of soybean root and stem rot, is responsible for enormous economic losses in soybean production. *P. sojae* secretes various effectors to reprogram host immunity. The plant apoplastic space is a major battleground in plant-pathogen interactions. Here we describe a protocol for purification and isolation of secreted proteins from *P. sojae*, including precipitation of secreted proteins from *P. sojae* culture filtrate, chromatographic purification of the secreted proteins and analysis of the proteins by Mass spectrometry. With this protocol, it will be easier to identify potential apoplastic effectors in *Phytophthora* and will benefit our understanding of plant-microbe interactions.

**Keywords:** *Phytophthora sojae*, Soybean root and stem rot, Secreted proteins, Chromatographic purification, ÄKTA, Apoplastic effectors

**[Background]** Purification of proteins secreted from *Phytophthora* species is essential for understanding *Phytophthora* pathogenesis. In the past, V8 juice and Plant (tomato, and Lima bean) juice medium have been used to culture *Phytophthora* and the culture filtrate was used for the subsequent analysis of *Phytophthora* secreted proteins. The drawback of these protocols is the culturing media contain huge amount of plant proteins, which represent a large proportion of the detected proteins. In this protocol, we made use of the Synthesis Liquid Medium, which does not contain any proteins. This medium significantly reduces the background of the *Phytophthora* culturing filtrate. Furthermore, making use of the Gel Filtration desalting and sieving columns instead of Ion Exchange columns, allows efficient and large-scale purification of *Phytophthora* secreted proteins.

### Materials and Reagents

1. Pipette tips
2. Scalpel
3. Filter paper (Whatman filters) (No. 1)
4. 0.22 µm Millex-GV filter (Merck, catalog number: SLGP033NS)
5. Amicon Ultra-15 Centrifugal Filter Unit 3KD (Merck, catalog number: UFC900308)
6. *P. sojae* strain (P6497)
7. V8 juice (<https://www.campbells.com/v8/vegetable-juice/>)
8. Calcium carbonate (CaCO<sub>3</sub>) (Sigma-Aldrich, catalog number: 398101)
9. Potassium Dihydrogen Phosphate (KH<sub>2</sub>PO<sub>4</sub>) (Merck, catalog number: 1048730250)
10. Yeast extract (Sigma-Aldrich, catalog number: Y1625-1KG)

11. Magnesium sulfate heptahydrate ( $\text{MgSO}_4 \cdot 7\text{H}_2\text{O}$ ) (Sigma-Aldrich, catalog number: RES0089M-A702X)
12. D-glucose (Sigma-Aldrich, catalog number: G8270-100G)
13. L-asparagine (Sigma-Aldrich, catalog number: A0884-100G)
14.  $\beta$ -sitosterol (Sigma-Aldrich, catalog number: S1270-10MG)
15. Thiamine(VB1) (Sigma-Aldrich, catalog number: T4625-5G)
16. Milli-Q-filtered  $\text{H}_2\text{O}$
17. Ammonium sulfate ( $(\text{NH}_4)_2\text{SO}_4$ ) (Sigma-Aldrich, catalog number: A4418-100G)
18. Tris-aminomethane (Tris-HCl) (Sigma-Aldrich, catalog number: 154563-1KG)
19. Ethylene Diamine Tetraacetic Acid (EDTA) (Sigma-Aldrich, catalog number: 80849-10MG)
20. 30% acrylamide
21. 10% sodium dodecyl sulfate (SDS) (Sigma-Aldrich, catalog number: L3771-100G)
22. 10% ammonium persulfate (Sigma-Aldrich, catalog number: A3678-25G)
23. N,N,N',N'-Tetramethylethylenediamine (TEMED) (Sigma-Aldrich, catalog number: T9281-25ML)
24. Coomassie brilliant blue (CBB-R-250) (Beyotime Biotechnology, catalog number: P0017)
25. Ethanol (ALADDIN-E, catalog number: A112719)
26. Acetic acid (ALADDIN-E, catalog number: A116174)
27. Methanol (ALADDIN-E, catalog number: M116127)
28. V8 juice with 2% agar (see Recipes)
29. Synthesis liquid medium (see Recipes)
30. TE buffer (see Recipes)
31. SDS-PAGE Gel (see Recipes)
32. R-250 staining solution (see Recipes)
33. Destaining solution (see Recipes)

## **Equipment**

1. Pipettes
2. Conical flask (1 L)
3. Beaker (5 L)
4. Measuring cylinder (1 L)
5. Constant temperature incubator (CTI) (25 °C)
6. Constant temperature shaker (CTS) (25 °C, 100 rpm)
7. Centrifuge
8. Liquid chromatograph (GE Healthcare, model: ÄKTA avant 25)
9. Column Sephadex G-25S (GE Healthcare, catalog number: 17140801)
10. Chromatography column (GE Healthcare, model: Superdex™ 200 Increase, catalog number: 28990944)

*Note: The materials, reagents and equipment not provided company and catalog number can be*

ordered from any qualified company for using in this experiment.

## **Procedure**

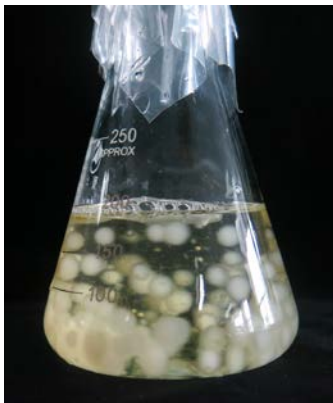
### **A. Preparation and culture of *P. sojae* for secreted protein**

1. *P. sojae* strain P6497 was grown in sterilized 10% V8 juice with 2% agar medium at 25 °C in the Constant Temperature incubator (CTI) under dark conditions for 4 days (Figure 1).



**Figure 1. *P. sojae* colony grown on V8 plates for 4 days**

2. For secreted proteins production, cut *P. sojae* grown on V8 plates into 3 mm x 3 mm discs with a sterilized scalpel. Transfer twenty *P. sojae* discs into 1 L synthesis liquid medium and incubate on the Constant temperature shaker (CTS) (25 °C, 100 rpm) for 10 days (Figure 2).



**Figure 2. *P. sojae* cultured in synthesis liquid medium for 10 days**

### **B. Extraction and collection of secreted protein from medium by *P. sojae***

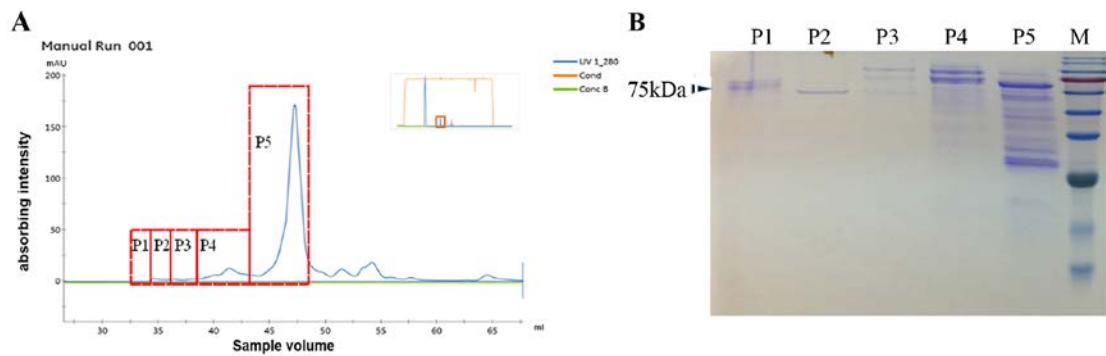
1. Collect *P. sojae* culture fluid by centrifugation at 1,200 x g for 20 min and filter through two layers of Whatman filters (No. 1) and then a 0.22 µm Millex-GV filter.
2. Add 70 g of (NH<sub>4</sub>)<sub>2</sub>SO<sub>4</sub> per 100 ml filtrate for precipitation and incubate for 12 h at 4 °C.
3. Dissolve the precipitate in 4 ml TE buffer.

C. Chromatographic purification and isolation of extracts secreted by *P. sojae* (see Video 1)



**Video 1. Gel filtration desalting chromatography for separating the precipitated proteins by AKTA**

1. Gel filtration desalting chromatography for separating the precipitated proteins
  - a. Equilibrate the Sephadex G-25S, the bound material and elute system using TE buffer.
  - b. Load the protein samples into the Column Sephadex G-25S.
  - c. Collect the fractions corresponding to each absorbance peak respectively and concentrate using 3-kD molecular mass centrifugal filter devices. (The absorption peaks stand for the line of UV280 on the screen of AKTA, Figure 3)
2. Gel filtration sieving chromatography
  - a. Collect the eluted samples from Sephadex G-25S and subsequently inject into TE buffer-equilibrated Superdex™ 200 Increase chromatography column.
  - b. Collect the fractions corresponding to each absorbance peak respectively, and then desalt and concentrate using 3-kD molecular mass centrifugal filter devices (see Amicon Ultra-15 Centrifugal Filter Unit 3-kD manual).
3. SDS-PAGE analysis of the fractions corresponding to each absorbance peak
  - a. Load the concentrated protein (20 µl about 100 µg/ml) into 10% SDS-PAGE gel and subject to electrophoresis for 1 h in 100 V.
  - b. Stain the gel with Coomassie Brilliant Blue overnight and then destain for 3 h at room temperature.
4. Separation and elution of protein in SDS-PAGE Gel
  - a. For the fractions showing more than one band after Coomassie Brilliant Blue staining in the SDS-PAGE gel (Figure 3), cut each protein band from gel and into 2-mm segments. Dry it (remove the water with Filter paper).
  - b. After drying, dissolve these segments in 0.1 ml 0.1% SDS (pH 6) and incubate at 70 °C for 1 h and then 37 °C overnight.
  - c. Collect the supernatant by centrifugation at 12,000 x g for 10 min at 4 °C.



**Figure 3. SDS-PAGE analysis of the protein fractions.** A. Absorbance peaks corresponding to the fractions in B, respectively. B. Fractions of secreted protein show on SDS-PAGE gel after Coomassie Brilliant Blue staining.

#### D. Identification of secreted protein by mass spectrometry

Analyze the collected supernatant by LC-MS/MS as described before (Wang *et al.*, 2003; Ma *et al.*, 2015). Proteins matched with peptides identified by mass spectrometry are used for further research. *Note: For further analysis of these proteins, they were expressed in Pichia pastoris (Km71) using the pPIZ9k vector or Escherichia coli (Rosetta) using pET32a.*

### Data analysis

Based on the molecular mass, secreted proteins were separated by Gel filtration sieving chromatography. Protein with similar molecular mass will form one peak. The area of the peak represents the abundance of purified proteins. Proteins collected in each peak were subsequently used for LC-MS/MS analysis and the data were shown in Ma *et al.* (2015).

### Notes

1. Kanamycin (50 µg/µl) can be added in the medium in case of bacterial pollution.
2. (NH<sub>4</sub>)<sub>2</sub>SO<sub>4</sub> should be added into the medium slowly with continuous swirling.

### Recipes

1. V8 juice with 2% agar (1 L)  
V8 juice: 100 ml  
CaCO<sub>3</sub>: 1 g  
ddH<sub>2</sub>O: 900 ml  
Agar power: 20 g
2. Synthesis liquid medium (1 L)  
0.5 g KH<sub>2</sub>PO<sub>4</sub>

- 0.5 g Yeast extract
- 0.25 g  $\text{MgSO}_4 \cdot 7\text{H}_2\text{O}$
- 0.001 g thiamine
- 25 g Glucose
- 1 g Asparagines
- 0.01 g  $\beta$ -Sitosterol
- Add water to a volume of 900 ml
- Mix and make up to 1 L with Milli-Q-filtered  $\text{H}_2\text{O}$
- 3. TE buffer
  - 10 mM Tris-HCl (pH 7.5) with 1 mM EDTA (TE)
- 4. 10% SDS-PAGE Gel
  - a. Resolving gel buffer (10 ml):
    - 4 ml Milli-Q-filtered  $\text{H}_2\text{O}$
    - 3.3 ml 30% acrylamide (Bio-Rad)
    - 2.5 ml 1.5 M Tris-HCl (Sigma-Aldrich) (pH 8.8)
    - 0.1 ml 10% SDS (Sigma-Aldrich)
    - 0.1 ml 10% ammonium persulfate (Sigma-Aldrich)
    - 0.004 ml TEMED (Bio-Rad)
  - b. Stacking gel buffer (3 ml):
    - 2.1 ml Milli-Q-filtered  $\text{H}_2\text{O}$
    - 0.5 ml 30% acrylamide (Bio-Rad)
    - 0.38 ml 1.5 M Tris-HCl (Sigma-Aldrich) (pH 6.8)
    - 0.03 ml 10% SDS (Sigma-Aldrich)
    - 0.03 ml 10% ammonium persulfate (Sigma-Aldrich)
    - 0.003 ml TEMED (Bio-Rad)
- 5. R-250 staining solution (100 ml)
  - Methanol: 45 ml
  - dd $\text{H}_2\text{O}$ : 45 ml
  - Acetic acid: 10 ml
  - R-250 Coomassie: 0.25 g
- 6. Destaining solution (1 L)
  - Ethanol: acetic acid: dd $\text{H}_2\text{O}$  = 1:1:2

## **Acknowledgments**

The authors would like to thank Dr. Zhenchuan Ma and this work was fund by grants to Yuanchao Wang from the China National Funds for Innovative Research Groups (Grant No. 31721004), the Special Fund for Agro-scientific Research in the Public Interest (201303018), and the China Agriculture Research System (CARS-004-PS14).

## **Competing interests**

The authors declare that there is no conflict of interest.

## **References**

1. Ma, Z., Song, T., Zhu, L., Ye, W., Wang, Y., Shao, Y., Dong, S., Zhang, Z., Dou, D., Zheng, X., Tyler, B. M. and Wang, Y. (2015). [A \*Phytophthora sojae\* glycoside hydrolase 12 protein is a major virulence factor during soybean infection and is recognized as a PAMP.](#) *Plant Cell* 27(7): 2057-2072.
2. Wang, Y. C., Hu, D. W., Zhang, Z. G., Ma, Z. C., Zheng, X. B. and Li, D. B. (2003). [Purification and immunocytolocalization of a novel \*Phytophthora boehmeriae\* protein inducing the hypersensitive response and systemic acquired resistance in tobacco and Chinese cabbage.](#) *Physiol Mol Plant Pathol* 63: 223-232.