

## Measurement of Lysosomal Size and Lysosomal Marker Intensities in Adult *Caenorhabditis elegans*

Julie M. Huynh<sup>1,\*</sup>, Hope Dang<sup>2</sup> and Hanna Fares<sup>2</sup>

<sup>1</sup>College of Medicine-Tucson, University of Arizona, Tucson, USA; <sup>2</sup>Department of Molecular and Cellular Biology, University of Arizona, Tucson, USA

\*For correspondence: [jhuynh@email.arizona.edu](mailto:jhuynh@email.arizona.edu)

**[Abstract]** Assays have been developed to study trafficking in various tissues of *Caenorhabditis elegans*. Adult *C. elegans* intestinal cells are large and have extensive endocytic networks, thus making them a good system for deciphering the endocytic pathway using live imaging techniques. However, the presence of auto-fluorescent gut granules in adult intestine can interfere with the signals of endocytic compartment reporters, like GFP. Here we demonstrate a protocol adapted from the original method developed by the Grant laboratory to identify signals from reporters in adult intestinal cells. The goal of this protocol is to identify endocytic compartments tagged with fluorescent markers without any confounding effects of background autofluorescent gut granules in adult intestinal cells of *Caenorhabditis elegans*.

**Keywords:** *C. elegans*, Intestine, Endocytosis, Gut granule, Confocal microscopy, Lysosome

**[Background]** *Caenorhabditis elegans* is a multicellular organism that has been used to study endocytic trafficking. Originally, assays were developed to study endocytosis in *C. elegans* oocytes, embryos, and coelomocytes (scavenger cells). Briefly, the assays in oocytes and embryos were performed by measuring the intensities and sizes of compartments containing a yolk protein-green fluorescent protein reporter (VIT-2::GFP) in intestinal compartments at the comma to '1.5 fold' stages of development (Grant and Hirsh, 1999; Schaheen *et al.*, 2006a). In adults, the intensities and sizes of compartments containing GFP (secreted from body wall muscle cells into the pseudocoelom and endocytosed by coelomocytes) were measured in the coelomocytes of transgenic adult *C. elegans* expressing *Pmyo-3::ssGFP* (signal sequence-GFP fusion protein) (Treusch *et al.*, 2004). These assays have been used to identify and to elucidate functions of mediators of the endocytic pathway (Fares and Greenwald, 2001a and 2001b; Schaheen *et al.*, 2006b; Huynh *et al.*, 2016).

Here, we present an assay that can be used to study endocytosis in another *C. elegans* tissue. Adult intestinal cells of *C. elegans* are large and are thus also a great system for deciphering the endocytic pathway using live imaging techniques. The functions of intestinal cells include food assimilation and synthesis, storage of macromolecules, stress response, and host-pathogen interactions (McGhee, 2007). However, one of the main challenges of studying endocytic transport by live imaging in adult intestinal cells is the prevalence of auto-fluorescent gut granules that interfere with the unambiguous determination of *bona fide* endocytic compartment reporter (like GFP) signals and therefore bias qualitative and quantitative studies (Clokey and Jacobson, 1986). We therefore adapted a method

developed by the Grant laboratory to conclusively identify signals from reporters in adult intestinal cells (Gleason *et al.*, 2016; Huynh *et al.*, 2016).

## **Materials and Reagents**

1. Microscope slides (VWR, catalog number: 48382-171)
2. Coverslips for microscope slides (Fisher Scientific, Fisherbrand, catalog number: 12-541A)
3. 60 mm plates (Fisher Scientific, Fisherbrand, catalog number: FB0875713A)
4. 100 mm plates (Fisher Scientific, Fisherbrand, catalog number: FB0875713)
5. Labeling tape (Fisher Scientific, Fisherbrand, catalog number: 15-901-5K)
6. Glass pipette
7. Aluminum foil
8. Autoclave tape
9. Inoculating loops
10. Pipette tips
11. *C. elegans* experimental strain:  
RT258: *unc-119(ed3); pwls50[lmp-1::GFP, unc-119]*  
*Note: LMP-1 is the orthologue of mammalian Lamp1 that localizes to lysosomes in Caenorhabditis elegans (Kostich et al., 2000)*
12. *C. elegans* control strain: N2
13. Calcium chloride dihydrate ( $\text{CaCl}_2 \cdot 2\text{H}_2\text{O}$ ) (Fisher Scientific, catalog number: C79-500)
14. Magnesium sulfate heptahydrate ( $\text{MgSO}_4 \cdot 7\text{H}_2\text{O}$ ) (Fisher Scientific, catalog number: M63-500)
15. Potassium phosphate monobasic ( $\text{KH}_2\text{PO}_4$ ) (Fisher Scientific, catalog number P285-500)
16. Cholesterol (Sigma-Aldrich, catalog number: C8667)
17. EtOH (Merck, catalog number: EX0276-4)
18. LE agarose for making 2.2% agarose (BioExpress, GeneMate, catalog number: E-3120)
19. Levamisole (Sigma-Aldrich, catalog number: 31742)
20. *C. elegans* culture
  - a. Platinum wire-pick to transfer *C. elegans*
  - b. Making NGM plates (Brenner, 1974; He, 2011) (see Recipes)  
Sodium chloride (NaCl) (Fisher Scientific, catalog number: S271-3)  
Bacto peptone (BD, Bacto™, catalog number: 211677)  
Bacto agar (BD, Bacto™, catalog number: 214030)  
Double distilled water  
Cholesterol 5 mg/ml in 95% EtOH (see Recipes)  
1 M  $\text{CaCl}_2$  sterile (see Recipes)  
1 M  $\text{MgSO}_4$  sterile (see Recipes)  
1 M  $\text{KH}_2\text{PO}_4$  pH 6.0 sterile (see Recipes)
  - c. Making 2x YT + OP50 for spotting NGM plates

- OP50 frozen stock
- 2x YT agar plate
- d. 2x YT agar plate (see Recipes)
  - Bacto tryptone (BD, Bacto™, catalog number: 211705)
  - Yeast extract (Fisher Scientific, catalog number: BP1422-500)
  - Sodium chloride (NaCl) (Fisher Scientific, catalog number: S271-3)
  - Bacto agar (BD, catalog number: 214030)
  - Double distilled water
- e. 2x YT medium (see Recipes)
- f. 2x YT medium + OP50 (see Recipes)
- 21. 2.2% agarose pad (see Recipes)
- 22. 9 mM levamisole/1x PBS (see Recipes)

## **Equipment**

1. 20 °C Incubator for *C. elegans* storage (VWR, manufactured by Sheldon Manufacturing, model: Model 2020)
2. 4 L flask
3. Stir bar
4. Stir plate
5. Autoclave
6. 2 L beaker
7. 1 L bottle
8. 37 °C Incubator (VWR, manufactured by Sheldon Manufacturing, model: 5025 T)
9. Microwave
10. Heating block
11. 5-100 ml bottle
12. Microscope (Carl Zeiss, model: STEMI SV 6)
13. Zeiss LSM 510 Meta confocal microscope (Zeiss, model: LSM 510):
  - a. 63x lens
  - b. Argon 488-nm laser
  - c. Helium neon 543-nm laser

## **Software**

1. MetaMorph® Microscopy Automation & Image Analysis Software (Sunnyvale, CA)

## **Procedure**

*Note: Before starting the protocol: Ensure that 60 mm NGM plates (spotted with OP50) have been prepared.*

### **Day 1**

1. Set up three plates with three adult hermaphrodites (one day post-L4 stage) on each spotted 60 mm NGM plate for each *C. elegans* experimental and control strain.
2. Leave plates in a 20 °C incubator for three days for the hermaphrodites to lay eggs.

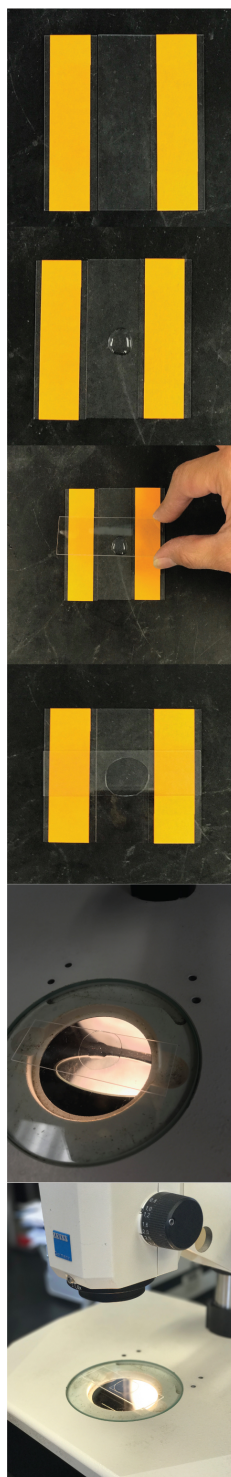
### **Day 4**

Move 50-100 L4 stage *C. elegans* of each experimental strain onto new OP50-spotted 60 mm NGM plates (the offspring of the P0 hermaphrodites). This ensures that these animals would be fairly synchronized young adults for imaging on the following day.

### **Day 5: Preparation for microscopy**

1. Prepare the imaging slide by first making the agarose pad. See steps 1-4 in Figure 1 for instructions.
2. Next, add 7 µl of 9 mM levamisole/1x PBS (see Recipes) to the center of the agarose pad (Figure 1, S5).
3. Pick 20-30 adult worms of one *C. elegans* experimental strain and submerge them in the 9 mM levamisole/1x PBS (Figure 1, S5).
4. Put a cover slip on top of the agarose pad, ensuring that it fully covers the *C. elegans* and the 9 mM levamisole/1x PBS (Figure 1, S6).
5. Repeat Steps 1-5 for all experimental and control strains used.
6. Do microscopy to image LMP-1::GFP (or marker of interest) and focus on the intestine right below the pharynx, using the 63x objective. Take images that show the desired signal while avoiding saturation of the signal.
7. Image *C. elegans* wild type strain RT258 first with both the Argon 488-nm laser and the Helium neon 543-nm laser. RT258 should be imaged first because it is the wild type strain which measurements from other experimental strains should be compared against.
8. Take images of the intestines of approximately 5-10 adult *C. elegans* for the wild type RT258 strain.
9. Repeat Steps 7 and 8 for each control and experimental strain. Make sure that images of all strains are taken using the same exposure and magnification as RT258.





**S1:** Place an imaging slide between two imaging slides that have each been covered with two layers of labeling tape. The tape on the imaging slides is to ensure that the agarose pad will be the height of the labeling tape.

**S2:** Add 150  $\mu$ l of 2.2% agarose to the center of the imaging slide. IMMEDIATELY proceed to step 3. Otherwise the 2.2% agarose will solidify.

**S3:** Place another imaging slide on top of the 2.2% agarose pad and press down to flatten it.

**S4:** Wait approximately one minute for the agarose to solidify. Then remove either the center imaging slide or the imaging slide used to flatten it by sliding, thus leaving the agarose pad on one slide.

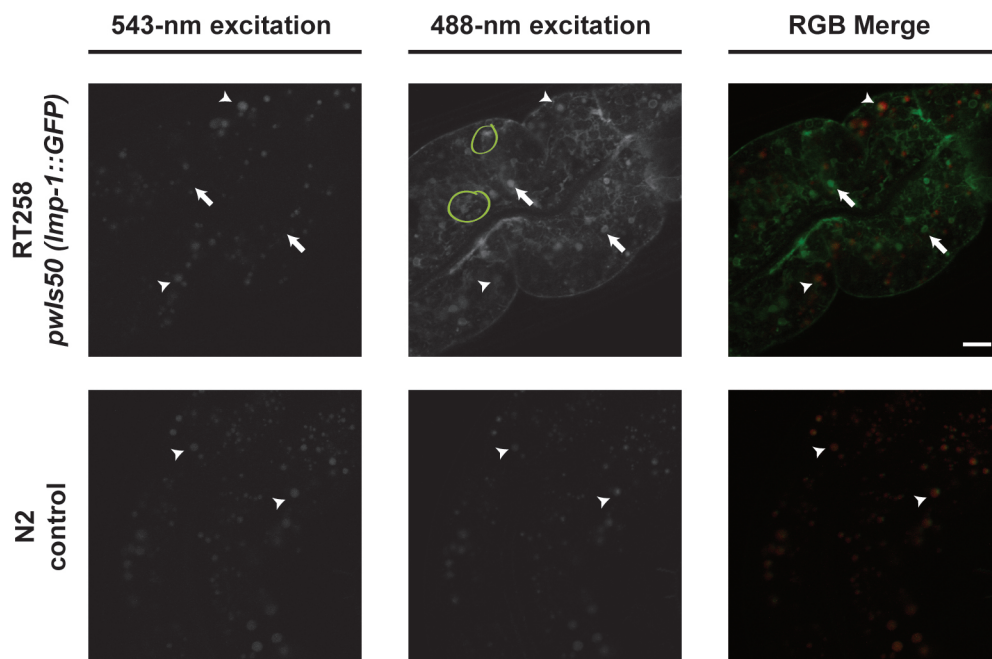
**S5:** Add 7  $\mu$ l of 9 mM levamisole/1x PBS to the center of the agarose pad. Add *C. elegans* from one experimental strain into the 9 mM levamisole/1x PBS on the agarose pad under the microscope.

**S6:** Once worms have been added, place a cover slip on top of the agarose pad.

**Figure 1. Preparation of imaging slides**

## Data analysis

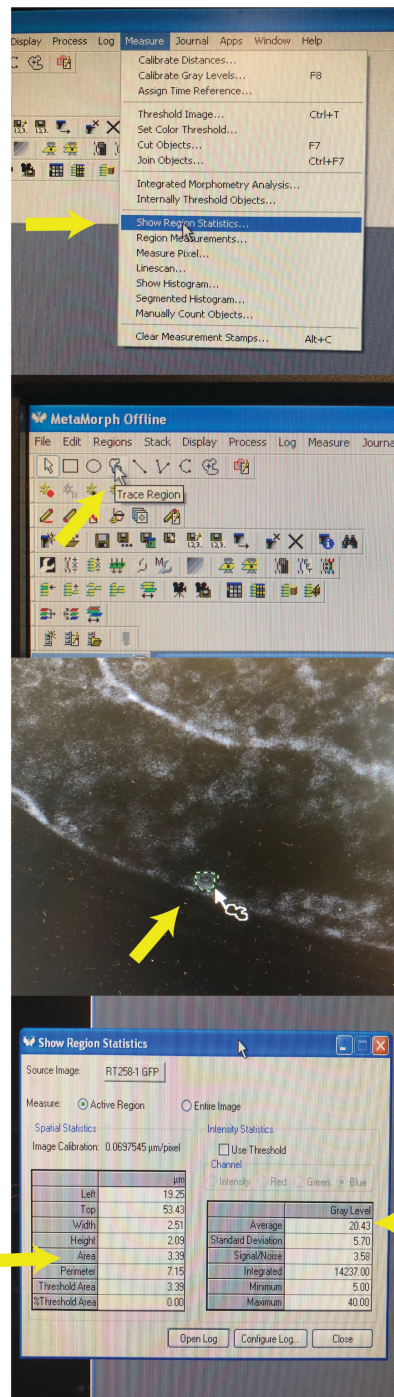
1. MetaMorph version 7.5.0.0 was used to analyze confocal microscopy images, though other software could also be used.
2. All confocal microscopy images were converted to '.tif' format for use with MetaMorph.
3. Identify the compartments that ONLY have green fluorescence (excited by the 488-nm laser). These compartments are LMP-1::GFP-positive that marks lysosomes. Compartments that are yellow (fluoresce with both 488-nm and 543-nm lasers) are gut granules, which will also be seen in *C. elegans* control strain N2: these gut granule compartments should not be measured or included for determining sizes of *bona fide* LMP-1::GFP compartments (Figure 2). We do not know whether the LMP-1::GFP signal decreases in older adults; if it does, this protocol may not be effective at differentiating bona fide GFP signal from autofluorescence.



**Figure 2. Representative images of intestinal images.** Compartments that fluoresce with both 543-nm and 488-nm excitation are granules while compartments that fluoresce with only 488-nm excitation are LMP-1::GFP-positive compartments. Arrows indicate examples of LMP-1::GFP-positive compartments. Arrowheads indicate examples of gut granules. Yellow circles indicate clumped compartments. Scale bar = 10  $\mu$ m.

4. For each LMP-1::GFP positive compartment, use MetaMorph to measure the intensity and area of the selected compartment. See Figure 3 for a pictorial guide (Figure 3).
  - a. Go to Measure in the tool bar and select 'Show Region Statistics...'
  - b. Use the trace region tool to select the LMP-1::GFP positive compartment.
  - c. Double click on the selected region.

- d. To get measurements of LMP-1::GFP-positive compartments' intensities, use the 'Average' Gray Level value. This value is already normalized by the area size.
- e. To get measurements of LMP-1::GFP-positive compartment size, use the 'Area' value.



**S1:** After opening the desired image (in .tiff format), go to Measure->Show Region Statistics.

**S2:** Select the trace region button.

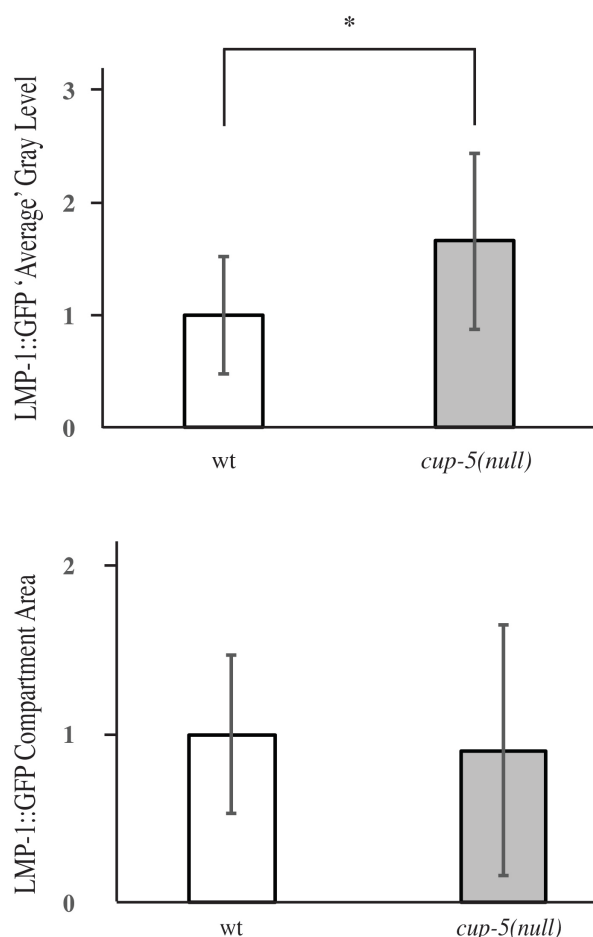
**S3:** Find an LMP-1::GFP-positive compartment and trace around the edges of the compartment. Once finished, double click on the compartment.

**S4:** After double clicking on the compartment, MetaMorph will compute values, including the area and intensity of the compartment. Record the numbers next to area and average gray level.

**Figure 3. Using MetaMorph to measure LMP-1::GFP-positive compartment size and marker intensity**

- f. Collect measurements of all the LMP-1::GFP-positive compartments for each adult *C. elegans* intestine, for each strain, from each image. Do not include clumped compartments because it is difficult to get accurate quantitations (due to ambiguity in the location of each individual compartment). The result is approximately 10-20 clearly defined compartments per image.
- g. Average all the LMP-1::GFP-positive intensity measurements using Excel to obtain the average LMP-1::GFP-positive intensity for each strain. Average all of the LMP-1::GFP positive size measurements to obtain the average compartment size for each strain. Figure 4 depicts results obtained when comparing the wild type strain with a *cup-5(null)* strain (CUP-5 is a cation channel; loss of CUP-5 protein results in lysosomal dysfunction) (Fares and Greenwald, 2001b; Hersh *et al.*, 2002). Loss of CUP-5 resulted in an increase in LMP-1::GFP-positive intensity, but no significant change in lysosomal size.

*Note: We have successfully used this protocol on strains carrying various mutations or following RNAi treatment.*



**Figure 4. Representative images of LMP-1::GFP intensity and compartment size data obtained.** \* indicates  $P < 0.05$ .

## **Notes**

1. The higher the 'Average' Gray Level, the larger the lysosomal compartment size.
2. If imaging multiple strains with the same marker, take all images using identical confocal settings, preferably during the same microscopy session. This would allow comparisons of compartment sizes and intensities between strains/genotypes. Additionally, though not always technically possible, when feasible, strains to be compared should be imaged on the same slide to reduce slide-to-slide variation during microscopy.
3. Repeat this experiment multiple times to determine reproducibility and statistical significance.
4. This method can be used to analyze markers for other organelles than lysosomes in adult intestinal cells, distinguishing marker signals from gut granule autofluorescence.

## **Recipes**

1. Nematode Growth Medium (NGM) agar (3 L)
  - a. Add the following to a 4-L flask:
    - NaCl (9.0 g)
    - Bacto peptone (7.5 g)
    - Bacto agar (51 g)
    - Double distilled water (2,925 ml)
  - b. Stir bar
  - c. Autoclave for 1 h
  - d. Place flask on stir plate, set on low stir, and let cool to 55 °C
  - e. Once cool, add the following:
    - CaCl<sub>2</sub> 1 M sterile (3 ml)
    - MgSO<sub>4</sub> 1 M sterile (3 ml)
    - KH<sub>2</sub>PO<sub>4</sub> 1 M pH 6.0 sterile (75 ml)
    - Cholesterol 5 mg/ml in 95% EtOH (3 ml)
  - f. Pour 8 ml into each 60 mm plate
  - g. Let dry for one night before storing unspotted plates at 4 °C or spotting with 2x YT + OP50
2. 2x YT agar (1 L)
  - a. Add the following into a 2-L (or larger) flask:
    - NaCl (5.0 g)
    - Bacto tryptone (16 g)
    - Yeast extract (10 g)
    - Bacto agar (15.0 g)
    - Double distilled water (Up to 1 L)
  - b. Stir bar
  - c. Autoclave for 1 h



- d. Place flask on stir plate, set on low stir, and let cool 55 °C
- e. Pour 18 ml into each 100 mm plate
- f. Wait two days for plates to dry and then store at 4 °C
3. 2x YT medium (1 L)
  - a. Add the following to a 2-L beaker
    - Tryptone (16 g)
    - Yeast extract (10 g)
    - NaCl (5 g)
    - Fill to 1 L with double distilled water
  - b. Add a stir bar into the beaker and let the mixture stir on a stir plate until homogenous
  - c. Pour into 1 L bottles
  - d. Autoclave for 30 min
  - e. Store at room temperature
4. 2x YT medium + OP50 (1 L)
  - a. Day 1: Use a pipette tip to spread OP50 frozen stock across a 2x YT agar plate. Place plate in a 37 °C incubator and leave it overnight
  - b. Day 2: Use an inoculating loop to pick one colony from the 2x YT agar plate and transplant the colony to a 1 L bottle of 2x YT Medium. Place the 1 L bottle into the 37 °C incubator and leave it overnight
  - c. Day 3: Remove bottle from the 37 °C incubator and store at 4 °C until use
5. 2.2% agarose pad
  - a. Add the following to a flask:
    - Agarose (0.22 g)
    - Double distilled water (10 ml)
  - b. Microwave flask for 60 sec. If the agarose and double distilled water solution is not homogenous, microwave for another 30 sec
  - c. Store in a tube that is in a heating block (68 °C)
6. 9 mM levamisole/1x PBS
  - a. Mix the following in a tube:
    - 9 ml of 10 mM levamisole (Sigma-Aldrich)
    - 1 ml of 10x PBS
  - b. Store at room temperature
7. Cholesterol (5 mg/ml)
  - a. Add the following to a 500 ml beaker
    - Cholesterol (2.5 g)
    - 100% EtOH (475 ml)
    - Double distilled water (25 ml)
  - b. Add a stir bar in the beaker and let the mixture stir on a stir plate until homogenous
  - c. Pour 100 ml into five 100 ml bottle (please confirm this description)

8. 1 M CaCl<sub>2</sub>
  - a. In a beaker, dissolve CaCl<sub>2</sub> (73.5 g) into 500 ml double distilled water
  - b. Add a Stir bar into the beaker and let the mixture stir on a stir plate until homogenous
  - c. Pour into a 500 ml bottle
  - d. Autoclave for 30 min
9. 1 M MgSO<sub>4</sub>
  - a. In a beaker, dissolve MgSO<sub>4</sub> (123.25 g) into 500 ml double distilled water
  - b. Add a Stir bar into the beaker and let the mixture stir on a stir plate until homogenous
  - c. Pour into a 500 ml bottle
  - d. Autoclave for 30 min
10. 1 M KH<sub>2</sub>PO<sub>4</sub> pH 6.0
  - a. In a beaker, dissolve KH<sub>2</sub>PO<sub>4</sub> (68.05 g) into 450 ml with double distilled water
  - b. Add a Stir bar into the beaker and let the mixture stir on a stir plate until homogenous
  - c. Adjust pH to 6.0 with NaOH
  - d. Fill up to 500 ml with double distilled water
  - e. Pour into a 500 ml bottle
  - f. Autoclave for 30 min

## **Acknowledgments**

This protocol was adapted from Huynh *et al.* (2016). This work was supported by a Microscopy Society of America grant (to J.M.H) and by National Science Foundation grant 3004290 (to H.F.). The authors have no conflicts of interest or competing interests.

## **References**

1. Brenner, S. (1974). [The genetics of \*Caenorhabditis elegans\*](#). *Genetics* 77(1): 71-94.
2. Clokey, G. V. and Jacobson, L. A. (1986). [The autofluorescent “lipofuscin granules” in the intestinal cells of \*Caenorhabditis elegans\* are secondary lysosomes](#). *Mech Ageing Dev* 35(1): 79-94.
3. Fares, H. and Greenwald, I. (2001a). [Genetic analysis of endocytosis in \*Caenorhabditis elegans\*: coelomocyte uptake defective mutants](#). *Genetics* 159(1): 133-145.
4. Fares, H. and Greenwald, I. (2001b). [Regulation of endocytosis by CUP-5, the \*Caenorhabditis elegans\* mucolipin-1 homolog](#). *Nat Genet* 28(1): 64-68.
5. Gleason, A. M., Nguyen, K. C., Hall, D. H. and Grant, B. D. (2016). [Syndapin/SDPN-1 is required for endocytic recycling and endosomal actin association in the \*C. elegans\* intestine](#). *Mol Biol Cell*.
6. Grant, B. and Hirsh, D. (1999). [Receptor-mediated endocytosis in the \*Caenorhabditis elegans\* oocyte](#). *Mol Biol Cell* 10(12): 4311-4326.



7. He, F. (2011). [Common worm media and buffers](#). *Bio-protocol* Bio101: e55.
8. Hersh, B. M., Hartweg, E. and Horvitz, H. R. (2002). [The \*Caenorhabditis elegans\* mucolipin-like gene cup-5 is essential for viability and regulates lysosomes in multiple cell types](#). *Proc Natl Acad Sci U S A* 99(7): 4355-4360.
9. Huynh, J. M., Dang, H., Munoz-Tucker, I. A., O'Ketch, M., Liu, I. T., Perno, S., Bhuyan, N., Crain, A., Borbon, I. and Fares, H. (2016). [ESCRT-dependent cell death in a \*Caenorhabditis elegans\* model of the lysosomal storage disorder mucopolipidosis type IV](#). *Genetics* 202(2): 619-638.
10. Kostich, M., Fire, A. and Fambrough, D. M. (2000). [Identification and molecular-genetic characterization of a LAMP/CD68-like protein from \*Caenorhabditis elegans\*](#). *J Cell Sci* 113 ( Pt 14): 2595-2606.
11. McGhee, J. D. (2007). [The \*C. elegans\* intestine](#). *WormBook*: 1-36.
12. Schaheen, L., Dang, H. and Fares, H. (2006a). [Basis of lethality in \*C. elegans\* lacking CUP-5, the Mucopolipidosis Type IV orthologue](#). *Dev Biol* 293(2): 382-391.
13. Schaheen, L., Patton, G. and Fares, H. (2006b). [Suppression of the cup-5 mucopolipidosis type IV-related lysosomal dysfunction by the inactivation of an ABC transporter in \*C. elegans\*](#). *Development* 133(19): 3939-3948.
14. Treusch, S., Knuth, S., Slaughter, S. A., Goldin, E., Grant, B. D. and Fares, H. (2004). [Caenorhabditis elegans functional orthologue of human protein h-mucolipin-1 is required for lysosome biogenesis](#). *Proc Natl Acad Sci U S A* 101(13): 4483-4488.