

Microvesicle Isolation from Rat Brain Extract Treated Human Mesenchymal Stem Cells

Ji Yong Lee¹, Seong-Mi Choi¹ and Han-soo Kim^{2, *}

¹Institute for BioMedical Convergence, Catholic Kwandong University-International St. Mary's Hospital, Incheon-si, Republic of Korea; ²Department of Biomedical Sciences, College of Medical Convergence, Catholic Kwandong University, Gangneung-si, Gangwon-do, Republic of Korea

*For correspondence: hankim63@gmail.com

[Abstract] Microvesicle (MVs) are submicron-sized membranous vesicles that are either actively released from cells via secretory compartments or shed from cell surface membranes. MVs are generated by many cell types and serve as vehicles that transfer biological information (e.g., protein, mRNA, and miRNA) to distant cells, thereby affecting their gene expression, proliferation, differentiation, and function. Although their physiological functions are not clearly defined, recent studies have shown their therapeutic potential for tissue repair and regeneration. While MVs can be isolated readily from mesenchymal stem cells (MSCs) and other cell types from various sources, the yield of MVs under conventional culture condition *in vitro* is one of the limiting factors for both the *in vivo* functional study as well as *in vitro* molecular analysis. Here, we provide a protocol to increase the yield of microvesicles by preconditioning MSCs with rat brain extract.

Keywords: Mesenchymal stem cell, Microvesicle, Extracellular vesicles, Sucrose gradient, Diafiltration, Tissue regeneration

[Background] Generation of neural stem cells or neural cells by direct reprogramming or utilization of mesenchymal stem cells for cell replacement therapy is potential options for neurodegenerative diseases (Adib *et al.*, 2015). Recent studies have demonstrated that microvesicles derived from MSCs represent a novel and safe alternative to other cell replacement approaches to enhance tissue regeneration such as neuronal regeneration, immune modulation, angiogenesis in brain injury (Kim *et al.*, 2013; Porro *et al.*, 2015; Lee *et al.*, 2016). Little is known about how external signals derived from damaged tissues can affect the quantity and composition of microvesicles. The contents and quantities of such functional secretome of MSCs can be significantly changed in response to their microenvironment (Qu *et al.*, 2007). For example, ischemic brain extracts or hypoxia are known to induce the synthesis of a number of cytokines and growth factors that are beneficial to the tissue regeneration process (Chen *et al.*, 2007; Shin *et al.*, 2014). In the present study, normal and ischemic brain extracts as a form of brain injury signal were employed to increase the yields as well as to modulate the molecular composition of MVs from MSCs that can be beneficial for their clinical application. Indeed, the quantity of MVs in conditioned medium of MSCs was greatly increased by the treatment of normal brain extracts or ischemic brain extracts. The current protocol was mainly based on previously described methods (Choi *et al.*, 2007; Kim *et al.*, 2012) with a few modifications including reagents, recipes. The yield and composition of microvesicles can be significantly modulated by

preconditioning of producing cells by physical, chemical or biological means. As an example, we utilized brain extract to stimulate MSCs to simulate signal for brain tissue damage and the final products (MVs) can be a potent specific therapy for brain tissue repair and regeneration. This protocol may provide a clue to develop better strategies to obtain higher yields of MVs with stronger therapeutic potential from various cell sources.

Materials and Reagents

1. 4-0 surgical suture
2. 0.2 µm syringe filters (Sartorius, catalog number: 17823-K)
3. 0.45 µm syringe filters (Sartorius, catalog number: 16555-K)
4. Falcon tubes 50 ml (Corning, Falcon®, catalog number: 352070)
5. Falcon tubes 15 ml (Corning, Falcon®, catalog number: 352099)
6. T75 culture flasks (SPL LIFE SCIENCES, catalog number: 70075)
7. Polyallomer tube 38 ml (Beckman Coulter, catalog number: 344058, for gradient formation and fractionation)
8. Polyallomer tube 13.2 ml (Beckman Coulter, catalog number: 344059, for gradient formation and fractionation)
9. 8-week-old male Sprague-Dawley rat (Koatech)
10. Human adipose tissue-derived MSCs (from 2 healthy female donors, passage 4) provided from Yonsei cell therapy center or adipose derived stem cells purchased from Lonza (Lonza, catalog number: PT-5006)
11. Isoflurane (Hana Pharm, Korea)
12. 80% N₂O
13. 20% O₂
14. Ketamine
15. Xylazine
16. Bradford protein assay kit I (Bio-Rad Laboratories, catalog number: 5000001)
17. Dulbecco's phosphate buffered saline (DPBS) (Biowest, catalog number: L0615-500)
18. Trypsin/EDTA (0.05%, phenol red) (Thermo Fisher Scientific, Invitrogen™, catalog number: 25300054)
19. Trypan blue solution 0.4% (in normal saline) (Thermo Fisher Scientific, Gibco™, catalog number: 15250061)
20. DMEM low glucose (GE Healthcare, Hyclone™, catalog number: SH30021.01)
21. Penicillin/streptomycin (5,000 U/ml) (GE Healthcare, Hyclone™, catalog number: SV30010)
22. Fetal bovine serum (FBS) (GE Healthcare, Hyclone™, catalog number: SH30071.03)
23. Sodium chloride (NaCl) (Sigma-Aldrich, catalog number: S9888)
24. HEPES (Thermo Fisher Scientific, Gibco™, catalog number: 15630080)
25. 10 mM Tris-HCl (WHITLAB, catalog number: BTH-9274)

26. Sucrose (Sigma-Aldrich, catalog number: S9378)
27. EDTA (Bio-Rad Laboratories, catalog number: 1610729)
28. OptiPrep™ (Alere Technologies, Axis-Shield Density Gradient Media, catalog number: 1114542)
29. MSC culture media (see Recipes)
30. Sucrose dilution buffer (see Recipes)
31. Sucrose cushion (see Recipes)
32. OptiPrep™ solution (see Recipes)

Equipment

1. Surgical scissors–Straight sharp/blunt 12 cm (Fine Science Tools, catalog number: 14001-12)
2. Narrow pattern forceps–Curved 12 cm, 2 x 1.25 mm (Fine Science Tools, catalog number: 11003-12)
3. Iris scissors–Large loops, angled (Fine Science Tools, catalog number: 14107-09)
4. Scalpel handle with scalpel (Fine Science Tools, catalog numbers: 10011-00, 10003-12)
5. Bone rongeur (JEUNG DO BIO & PLANT, catalog number: H-2041-1)
6. Adult rat brain matrix (Kent Scientific, catalog number: RBMS-300C)
7. Tissue grinders (WHEATON, catalog number: 357546)
8. Pipettes
9. 10 ml serological pipettes (SPL LIFE SCIENCES, catalog number: 91010)
10. Ice bucket
11. Centrifuge (Eppendorf, model: 5804)
12. Minimate TFF capsule system with a 100 kDa membrane (Pall, catalog number: OA100C12)
13. Glass Pasteur pipettes (Fisher Scientific, catalog number: 13-678-20A)
14. 37 °C, 5% CO₂ cell culture incubator (Eppendorf, model: Galaxy® 170 S)
15. Inverted microscope (Olympus, model: CKX41)
16. Hemocytometer
17. Ultracentrifuge (Beckman Coulter, model: Optima™ XPN-100)
18. Rotor: SW41Ti (Beckman Coulter, catalog number: 331362)
19. Rotor: SW32Ti (Beckman Coulter, catalog number: 369650)
20. Peristaltic pump (Poong Lim Tech, catalog number: PP-150)
21. Masterflex L/S Easy-Load II head for Precision Tubing, PPS/CRS (Cole-Parmer, catalog number: EW-77200-50)
22. Feed reservoir (100 ml or 500 ml)

Procedure

A. Procedures for permanent middle cerebral artery occlusion and brain extracts preparation

1. Prepare two 8-week-old male Sprague-Dawley rats, one for normal and one for ischemic brain injury.

Note: One rat brain is enough for 5-10 experiments of the present experimental scale.

2. Ischemic brain injury (MCAO surgery)
 - a. Anesthetize rats with 3% isoflurane (Hana Pharm, Seoul, Korea) in a mixture of 80% N₂O and 20% O₂.
 - b. Place the rat in a face-up supine position, incise midline of neck skin and retract neck muscles gently.
 - c. Carefully isolate the left common carotid artery and external carotid artery.
 - d. Ligate left common carotid artery and external carotid artery with a 4-0 surgical suture temporarily.
 - e. Incise left internal carotid artery slightly and insert 4-0 surgical suture into the left internal carotid artery and advance carefully to the Circle of Willis.
 - f. Loose the knot that tied the external carotid artery and tie tightly left common carotid artery.
 - g. Suture the neck skin.
3. 24 h after MCAO surgery, normal rats and ischemic brain injury rats are deeply anesthetized with an intraperitoneal injection of ketamine (40 mg/kg body weight) and xylazine (5 mg/kg body weight), and then are perfused with normal saline.
4. After the rats are perfused, use surgical scissors to remove the head with a cut posterior from the ears. Quickly make a midline incision in the head skin, aseptically remove the skull and meninges by bone rongeur.

Note: The methods for rat sacrifice and brain tissue extraction were performed as previously described by Spijker (2011).

5. After placing whole brain on a brain matrix, make coronal dissection the region of the middle cerebral artery (bregma -1~+ 1 mm) on the ice from the ipsilateral hemisphere, collect the sliced brain tissue (Figure 1A).
6. Homogenize tissue pieces using tissue grinders.
7. Centrifuge tissue homogenates at 100,000 x g for 2 h at 4 °C, and then take supernatants.
8. Centrifuge the supernatants at 100,000 x g for 1 h at 4 °C (Figure 1B).
9. Filter the supernatants through a 0.2 µm filter. Protein content was measured using the Bradford assay (Figure 1C). (Typical total amount of protein is 120-220 mg.)

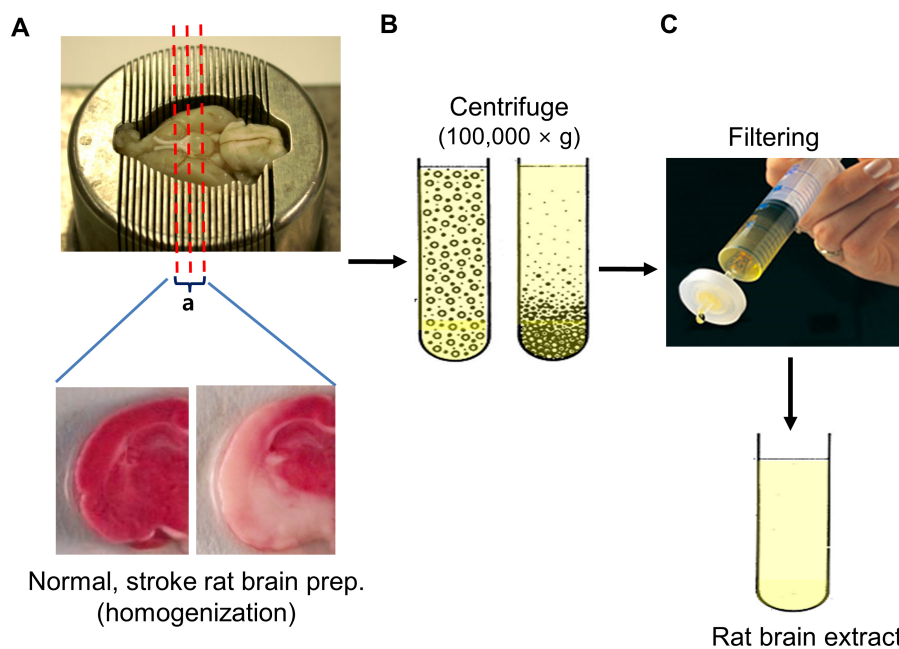


Figure 1. Preparation of brain extract. A. Rat brain was placed on a brain matrix, coronary dissected the region of the middle cerebral artery (bregma $-1 \sim +1$ mm) from the ipsilateral hemisphere and the sliced brain tissue was collected. B. Brain homogenates were ultracentrifuged to remove rat brain-derived microvesicles, filtered to remove residual aggregates and cellular debris. C. The supernatant was finally filtered through $0.2 \mu\text{m}$ syringe filter and aliquots were stored at -80°C .

B. Cell culture procedure

1. Rapidly thaw (less than 3 min) frozen human MSC (hMSC) vials in a 37°C water bath.
2. Pipet entire contents of the cryovials into a sterile 50 ml conical tube and carefully add 10 volume of prewarmed complete culture medium (DMEM containing 10% fetal bovine serum).
3. After gentle swirling of tube determine the cell concentration by hemocytometer and adjust cell concentration at $3 \times 10^5/\text{ml}$ with prewarmed complete culture medium.
4. Inoculate 75 cm^2 flasks at $\sim 8 \times 10^3 \text{ cells}/\text{cm}^2$ and incubate at 37°C in a 5% CO_2 incubator.
5. Exchange the medium with fresh prewarmed complete medium 24 h post thaw.
6. Observe culture flasks routinely on an inverted microscope.
7. When cells are nearly confluent (over 80% confluent), aspirate medium and floating debris from a confluent monolayer and discard.
8. Wash cells with prewarmed PBS once and add 5 ml of 0.05% trypsin-EDTA to the culture flasks. Incubate at 37°C until 50-70% detached (approximately 2-5 min).
9. Add 5 ml of prewarmed complete medium and gently pipet up and down to detach adherent cells and disperse cells into single cell suspension.
10. Transfer cell suspension into sterile 50 ml conical tubes. Wash flasks with additional 5 ml complete medium and combine into the conical tube.
11. Centrifuge cell suspension at $300 \times g$ for 5-10 min.

12. Aspirate supernatant and resuspend the pellet in an appropriate volume of prewarmed complete medium.
13. Inoculate total of 50 flasks (75 cm²) with 20 ml/flask of 1×10^5 viable cells/ml for microvesicle isolation and return to incubator.
Note: Cell cultures should be re-fed every 3 days with fresh complete medium for optimal cell growth.
14. When cells are nearly confluent (over 80% confluent), wash the cells extensively with PBS at ambient temperature or pre-warmed at 37 °C (5 times, 10 ml per wash).
15. After final wash, culture medium was replaced with 20 ml serum- and antibiotics-free low-glucose DMEM medium with 300 µg of brain extract or the ischemic brain extracts (final concentration of 15 µg/ml). The culture supernatant was harvested 48 h later to isolate microvesicles (MVs) (Figure 2).

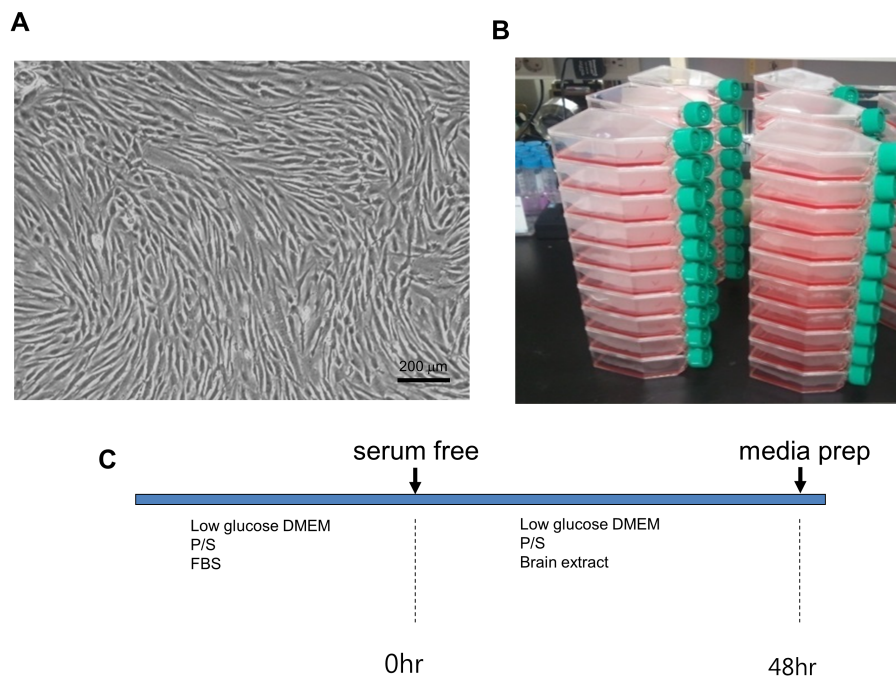


Figure 2. MSC culture. A. Microscopic image of hMSCs; B. Scale of hMSCs culture; C. Experimental schedule. The primary cultured MSCs (2×10^6 cells/flask) were seeded in 75 cm² culture flasks (total of 50 flasks). C. After culturing in complete media, culture medium was replaced with serum-free antibiotic-free medium for 48 h, and the culture supernatant was harvested to isolate microvesicles.

Note: MVs prepared from untreated MSCs have low protein yields (< 0.3 mg/ 3×10^8 cells/48 h) while the amount of MVs from MSC-conditioned medium was greatly increased by treatment with normal or ischemic brain extracts (2.2 mg/ 3×10^8 cells/48 h for MVs from normal brain extract-treated MSCs and 2.5 mg/ 3×10^8 cells/48 h for MVs from ischemic brain extract-treated MSC).

C. Isolation of microvesicles (MVs)

1. Collect the culture supernatant from MSC cultures (conditioned media amount about 1,000 ml).
2. To remove cell and cellular debris, centrifuge the harvest culture supernatant media once at 500 x g for 10 min and then the supernatant is collected.
3. Centrifuge the supernatant at 800 x g for 15 min, then take the supernatants (about 1,000 ml).
4. Concentrate the supernatants to 30 ml (about 33 fold concentration) by ultrafiltration using the Minimate Tangential Flow Filtration (TFF) capsule system with a 100 kDa cut-off membrane at 4 °C (Figure 3).

- a. Remove the caps from the feed and retentate ports of the Minimate TFF capsule.

Note: Do not discard caps. They are required for storage.

- b. Screw a male luer-to-hose-barb connector (included) into each of the feed/retentate ports.
- c. Cut a piece of tubing 3.2 mm (1/8") i.e., long enough to reach from the feed reservoir, through the pump head to the capsule.

Note: Keep tubing lengths as short as possible to reduce system hold-up volume.

- d. Connect the tubing to the hose-barb on one of the feed ports. Install the tubing in the pump head. Put the other end of the tubing into the reservoir.

Notes:

- i. *If a pressure gauge or transducer is used, connect the tubing to the pressure device. Then connect the pressure device as close as possible to the feed port using suitable connectors.*
- ii. *Feed and retentate ports are interchangeable. Depending on the orientation of the capsule, choose the port that is at the lowest elevation as the feed port. This allows for air to be easily expelled when liquid is pumped through the capsule. The recommended crossflow for the Minimate TFF capsule is 30-40 ml/min.*
- e. Cut another piece of tubing, long enough to return from the retentate port to the sample reservoir.
- f. Attach the tubing to the retentate hose-barb and put the other end in the reservoir. (Again, if a pressure gauge or transducer is used, the tubing connects to the pressure device, which must then be connected to the retentate port.)
- g. Place the retentate screw clamp on the retentate tubing close to the retentate port (after the pressure gauge if installed). Secure in place but do not tighten to restrict the tubing.
- h. Remove one of the filtrate caps.
- i. Attach a female luer-to-hose-barb fitting to one of the filtrate/vent ports.

Note: This concentration ratio was selected based on the capacity of the subsequent ultracentrifugation steps. Thus, the concentration ratio may vary depending on the ultracentrifuge (rotor and tubes), cell types and culture condition employed.

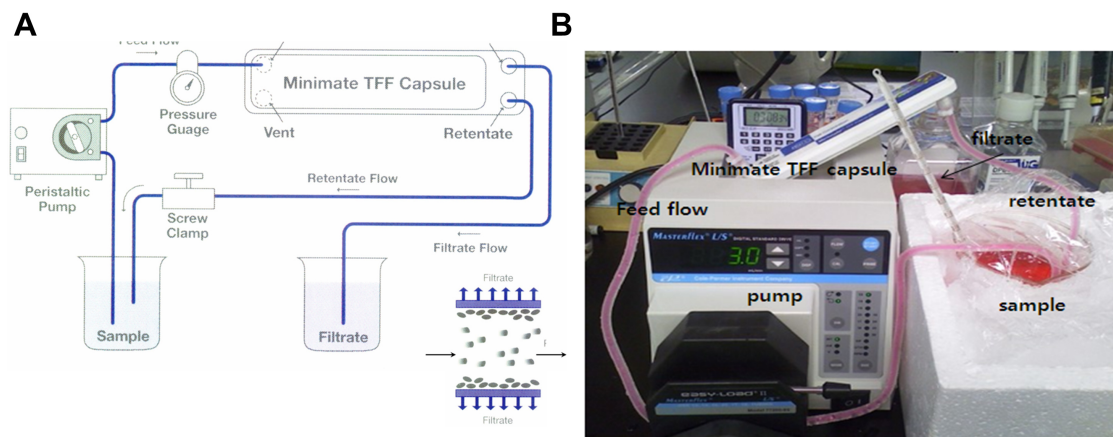


Figure 3. Diafiltration of hMSC conditioned media. A. Schematic drawing of Tangential Flow Filtration (TFF) system; B. Photo image of diafiltration system using Minimate TFF capsule system with a 100 kDa cutoff membrane.

5. To enrich the MVs, the concentrated supernatant is agglutinate using sucrose gradient centrifugation.
6. Prepare 38 ml polyallomer tube and 0.8 and 2.7 M sucrose cushions (see Recipes 2 and 3).
7. Carefully put 0.5 ml of 2.7 M sucrose into the bottom of a tube.
8. Carefully add 0.8 M sucrose 1 ml just above the 2.7 M sucrose layer. Allow the sucrose solution to run down very slowly inside of tube wall.
9. Add 33 ml sample on the sucrose cushion taking care not to break the sucrose layer (Figure 4A).
10. Centrifuge the tube at 100,000 x g for 1 h at 4 °C [Rotor: 32Ti, Acceleration: max, Deceleration: slow (9)].
11. After centrifugation, remove the supernatant (about 32 ml) carefully from sucrose fraction-enriched MVs layer.

Note: MVs are about just above sucrose cushion (yellow line, Figure 4A) and should be handled with care because it is difficult to identify with the naked eyes (Figure 4B).

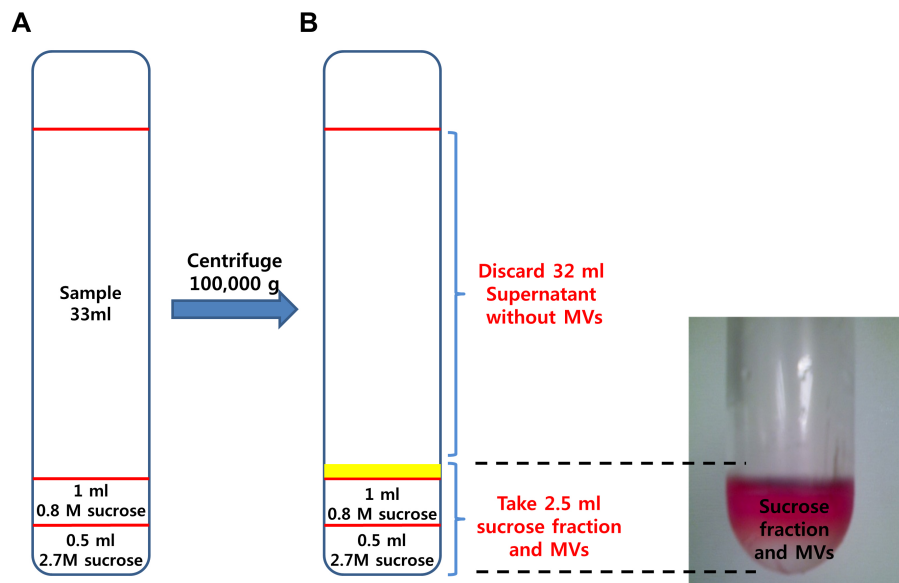


Figure 4. Enrichment of microvesicles by sucrose gradient ultracentrifugation. A. A discontinuous sucrose density gradient was prepared by layering 1.5 ml of 0.8 M sucrose gradient upon 0.5 ml of 2.7 M sucrose density solution. Next, 33 ml of concentrated conditioned medium was added to the top layer carefully. B. After centrifugation, microvesicles are enriched in the interface between medium and sucrose layers.

12. Prepare OptiPrep™ solution (see Recipe 4) and two 13.2 ml polyallomer tubes.
13. For further purification of the MVs, mix the sucrose fraction-enriched MVs with OptiPrep™ (final concentration = 30%).
14. Transfer about 2.5 ml of sucrose fraction-MVs into a 15 ml tube.
15. Add 1.34 ml sucrose dilution buffer to 2.5 ml Sucrose fraction-enriched MVs then mix 5.76 ml of 50% OptiPrep™ to make 30% OptiPrep™ (total volume: 9.6 ml).
16. Put 4.8 ml of 30% OptiPrep™-sample in two 13.2 ml polyallomer tubes, each.
17. Add 3 ml of 20% OptiPrep™ just above 30% OptiPrep™ layer, each.
18. Add 2.5 ml of 5% OptiPrep™ on top of 20% OptiPrep layer, each (Figure 5A).

Note: Caution! OptiPrep™ has a low viscosity, so be careful not to disturb or break the layer.

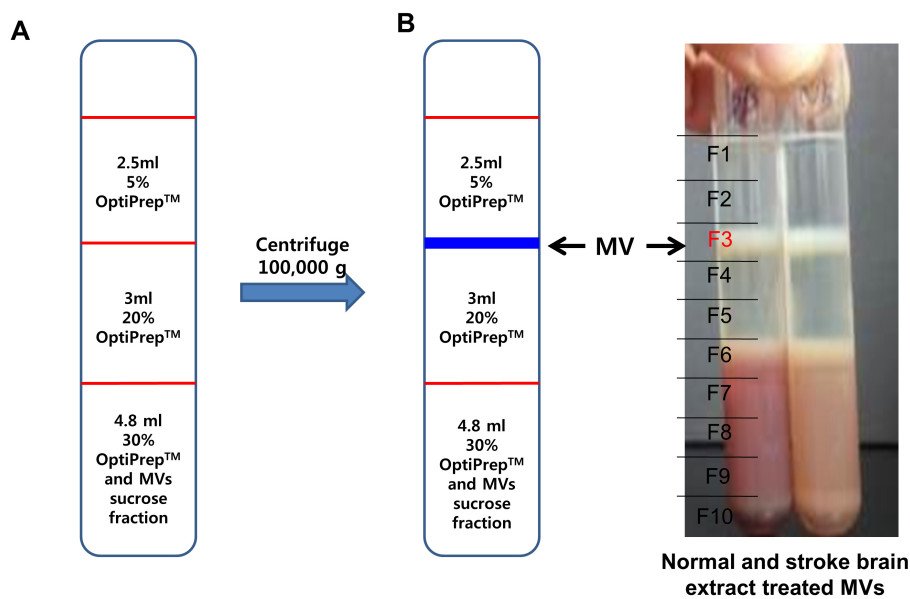


Figure 5. Isolation of microvesicles by OptiPrep density gradient. A. Discontinuous OptiPrep™ gradients were prepared in 12 ml tube with 3 layers of gradients consisting of 5% (2.5 ml) of the 2 additional layers of 20% (3 ml) and 30% (4.8 ml) of stock OptiPrep™. The stock solutions were diluted with 20 mM HEPES/150 mM NaCl buffer (pH 7.2) and sample solution (microvesicle enriched fraction from sucrose gradient) was mixed with 30% gradient solution. B. After centrifugation, sample tubes were arbitrarily divided into 10 equal portions and 1 ml aliquots of each portion were collected to new tubes. The major microvesicle fraction was clearly shown in the interface between 5% and 20% OptiPrep™ (F3 layer).

19. Centrifuge the sample tube at 200,000 x g for 3 h at 4 °C (Rotor: SW41Ti).
20. After centrifugation, divide sample tubes into 10 equal portions and taken 1 ml each. The MVs are at the interface between 5% and 20% OptiPrep™ showing the white band (F3 layer) (Figure 5B).
21. Collect 1 ml MVs (F3), dilute 10-fold with PBS (9 ml) and centrifuge at 100,000 x g for 1 h at 4 °C (Rotor: SW41Ti).
22. After centrifugation, identify a pellet at the bottom of the tube. Remove the PBS and dissolve the pellets with 100 µl of PBS.
23. The protein concentration of each fraction is determined using refractometer and the Bradford dye assay.

Note: For therapeutic purposes, quantification of final products should be expressed as weight/ml (or unit/ml), if possible. Since protein is one of the main components of the microvesicles, protein quantification was employed. Alternatively, the quantification of MVs can be done by flow cytometry, nanoparticle tracking analysis (NTA) or resistive pulse sensing combined with Raman microspectroscopy.

Data analysis

- The optimal time point for harvesting conditioned medium of hMSCs for later microvesicle isolation was determined based on the following assays:
 - > 90% cell viability measured by flow cytometric analysis (Annexin V-PI staining).
 - Protein concentration measured by Bicinchoninic acid (BCA) assay.
- Upon treating brain extract to the target hMSCs, cell morphology was changed significantly (Figure 6).

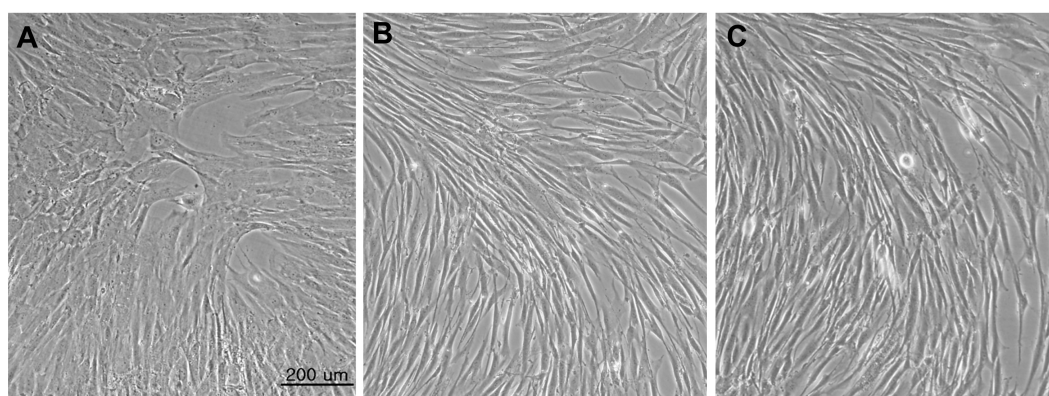


Figure 6. Cell morphology untreated hMSCs to brain extract treated hMSCs. A. Untreated hMSCs; B. 20% normal brain extract treated hMSCs; C. 20% stroke brain extract treated hMSCs. All images were acquired at 48 h after medium replacement.

- To quantify the protein concentration in untreated-MVs and brain extract treated-MVs, samples were measured by Bradford method (Table 1).

Table 1. Protein amount in MVs from 1 L of conditioned MSCs medium

	MVs from hMSCs under conventional condition	MVs from hypoxia treated-hMSCs	MVs from brain extract treated-hMSCs
Protein concentration	70-300 μ g	2-5 mg	10-60 mg

Notes

The quantity of the resulting microvesicles can be significantly varied depending on MSC tissue source, MSC cell density, passage number, duration of culture and culture microenvironment (biological, chemical or physical stimulations) for conditioned medium harvesting and the concentration of brain extract.

The processed data and statistical analyses are published in Lee *et al.* (2016), which can be found at: <https://www.ncbi.nlm.nih.gov/pmc/articles/PMC5016792/>

Recipes

1. MSC culture media
DMEM low glucose
100 U/ml Pen/Strep (100x stock)
10% FBS
2. Sucrose dilution buffer
HEPES 20 mM/150 mM NaCl buffer (pH 7.2)
3. Sucrose cushion
0.8 M sucrose cushion: Dissolve 5.48 g of sucrose in 20 ml of sucrose dilution buffer (pH 7.2)
filter sterile with 0.45 μ m syringe filter and store at 4 °C before use
2.7 M sucrose cushion: Dissolve 9.24 g sucrose in 10 ml sucrose dilution buffer (pH 7.2)
Note: 2.7 M sucrose pre-dissolved in 55 °C oven, filter sterile with 0.45 μ m syringe filter and store at 4 °C before use.
4. OptiPrep™ solution
Homogenization media (HM): 0.25 M sucrose, sucrose dilution buffer (pH 7.4)
OptiPrep™ working solution: 0.25 M sucrose, 1 mM EDTA, 10 mM Tris-HCl (pH 7.4)
50% OptiPrep™: 30 ml (60% OptiPrep™ 25 ml + OptiPrep™ working solution 5 ml)
20% OptiPrep™: 20 ml (50% OptiPrep™ 8 ml + HM media 12 ml)
5% OptiPrep™: 20 ml (50% OptiPrep™ 2 ml + HM media 18 ml)

Acknowledgments

This protocol is adapted from 'Microvesicles from brain-extract-treated mesenchymal stem cells improve neurological functions in a rat model of ischemic stroke' (Lee *et al.*, 2016). This work was supported by the Bio & Medical Technology Development Program of the National Research Foundation (NRF) funded by the Korean government (MSIP), No. 2012M3A9B4028639.

References

1. Adib, S., Tiraihi, T., Darvishi, M., Taheri, T. and Kazemi, H. (2015). [Cholinergic differentiation of neural stem cells generated from cell aggregates-derived from human bone marrow stromal cells](#). *Tissue Eng Reg Med* 12(1): 43-52.
2. Chen, X., Li, Y., Wang, L., Katakowski, M., Zhang, L., Chen, J., Xu, Y., Gautam, S.C., Chopp, M. (2007). [Ischemic rat brain extracts induce human marrow stromal cell growth factor production](#). *Neuropathology* 27: 255-363.
3. Choi, D. S., Lee, J. M., Park, G. W., Lim, H. W., Bang, J. Y., Kim, Y. K., Kwon, K. H., Kwon, H. J., Kim, K. P. and Ghoo, Y. S. (2007). [Proteomic analysis of microvesicles derived from human colorectal cancer cells](#). *J Proteome Res* 6(12): 4646-4655.

4. Kim, H. O., Choi, S. M. and Kim, H. S. (2013). [Mesenchymal stem cell-derived secretome and microvesicles as cell-free therapeutics for neurodegenerative disorders](#). *Tissue Eng Reg Med* 10(3): 93-101.
5. Kim, H. S., Choi, D. Y., Yun, S. J., Choi, S. M., Kang, J. W., Jung, J. W., Hwang, D., Kim, K. P. and Kim, D. W. (2012). [Proteomic analysis of microvesicles derived from human mesenchymal stem cells](#). *J Proteome Res* 11(2): 839-849.
6. Lee, J. Y., Kim, E., Choi, S. M., Kim, D. W., Kim, K. P., Lee, I. and Kim, H. S. (2016). [Microvesicles from brain-extract-treated mesenchymal stem cells improve neurological functions in a rat model of ischemic stroke](#). *Sci Rep* 6: 33038.
7. Porro, C., Trotta, T. and Panaro, M. A. (2015). [Microvesicles in the brain: Biomarker, messenger or mediator?](#) *J Neuroimmunol* 288: 70-78.
8. Qu, R., Li, Y., Gao, Q., Shen, L., Zhang, J., Liu, Z., Chen, X., Chopp, M. (2007). [Neurotrophic and growth factor gene expression profiling of mouse bone marrow stromal cells induced by ischemic brain extracts](#). *Neuropathology* 27: 355-363.
9. Shin, J.H., Park, Y.M., Kim, D.H., Moon, G.J., Bang, O.Y., Ohn, T., Kim, H.H. (2014). [Ischemic brain extract increases SDF-1 expression in astrocytes through the CXCR2/miR-223/miR-27b pathway](#). *Biochim Biophys Acta* 1839: 826-936.
10. Spijker, S. (2011). [Dissection of rodent brain regions](#). *Neuroprotomics* 57: 13-26.