

## Adoptive Transfer of Lung Antigen Presenting Cells

Xiaofeng Zhou\* and Bethany B Moore

Department of Internal Medicine, Pulmonary and Critical Care Medicine Division, University of Michigan, Ann Arbor, Michigan, USA

\*For correspondence: [xiazhou@umich.edu](mailto:xiazhou@umich.edu)

**[Abstract]** Our protocol describes adoptive transfer of antigen presenting cells (APCs) isolated from the lungs by enzymatic digestion and magnetic enrichment. This protocol can be used to study APC functions and trafficking.

**Keywords:** Lung antigen presenting cells, Dendritic cells, Macrophages, Adoptive transfer, Enzymatic digestion, Magnetic cell isolation, Intravenous injection

**[Background]** Lung APCs, including macrophages and dendritic cells (DCs), play a critical role in sensing invading pathogens, priming T cell responses and controlling tolerogenic responses. Lung DCs are the most potent professional APCs, including conventional DCs (cDCs) and plasmacytoid DCs (pDCs) during steady-state, and newly recruited monocyte-derived DCs (moDCs) upon inflammation (Kopf *et al.*, 2015). Lung resident macrophages, including alveolar macrophages, interstitial macrophages and bronchial macrophages, are less potent in presenting antigens.

All macrophages and cDCs express high levels of CD11c on their cell surface, while pDCs express intermediate levels of CD11c (Becher *et al.*, 2014). Thus, CD11c magnetic microbeads can be used to isolate mouse lung macrophages and cDCs. We developed a protocol of isolating lung APCs from normal mice and then adoptively transferring them to syngeneic bone marrow transplanted mice. We used this protocol to determine whether normal lung APCs are sufficient to restore T helper cell polarization in response to herpesvirus infection post-transplant (Zhou *et al.*, 2016).

### Materials and Reagents

1. PrecisionGlide needles 23 G (BD, catalog number: 305111)
2. PrecisionGlide 26 G (BD, catalog number: 305193)
3. 60 x 15 mm Petri dish (Corning, Falcon®, catalog number: 351007)
4. 50 ml flip-top conical centrifuge tubes (Thermo Fisher Scientific, catalog number: 362696)
5. 10 ml Luer slip tip syringe (Fisher Scientific, catalog number: 14-841-55)
6. Razor blade
7. Tissue culture plates
8. 100 µm nylon screen (Nylon Mesh Lab Pack) (Sefar, catalog number: 7050-1220-000-20)
9. MACS LS column (Miltenyi Biotec, catalog number: 130-042-401)
10. 15 ml conical centrifuge tubes (Corning, Falcon®, catalog number: 352097)

11. 1 ml slip tip syringe (BD, catalog number: 309659)
12. 0.22  $\mu$ m filter (Millipore Express PLUS 0.22  $\mu$ m PES) (EMD Millipore, catalog number: SCGPU01RE)
13. Pipette tips
14. Latex gloves
15. Syringe tip caps (BD, catalog number: 305819)
16. Mice
17. 70% ethanol
18. Phosphate buffered saline (PBS, pH 7.4) (Thermo Fisher Scientific, Gibco™, catalog number: 10010023)
19. Heat-inactivated fetal bovine serum (Mediatech, catalog number: 35-010-CV)
20. Penicillin-streptomycin 100x (Mediatech, catalog number: 30-002-CI)
21. L-glutamine 100x, 200 mM (Thermo Fisher Scientific, Gibco™, 25030-018)
22. Amphotericin B (Thermo Fisher Scientific, Gibco™, catalog number: 15290018)
23. Dulbecco's modified Eagle's medium (DMEM) (Lonza, catalog number: 12-604F)
24. Collagenase A (Roche Diagnostics, catalog number: 10103578001)
25. DNase I (Sigma-Aldrich, catalog number: D4263)
26. Ammonium chloride (NH<sub>4</sub>Cl) (Sigma-Aldrich, catalog number: 254134)
27. Potassium bicarbonate (KHCO<sub>3</sub>) (Sigma-Aldrich, catalog number: 431583)
28. EDTA, 0.5 M (Lonza, catalog number: 51201)
29. Bovine serum albumin (BSA) (Sigma-Aldrich, catalog number: A3912)
30. Percoll (Sigma-Aldrich, catalog number: P1644)
31. Mouse CD11c MicroBeads UltraPure (Miltenyi Biotec, catalog number: 130-108-338)
32. Trypan blue solution, 0.4% (Thermo Fisher Scientific, Gibco™, catalog number: 15250061)
33. Complete media (see Recipes)
34. Collagenase digest solution (see Recipes)
35. RBC lysis buffer (see Recipes)
36. Serum free media (see Recipes)
37. MACS buffer (see Recipes)

## **Equipment**

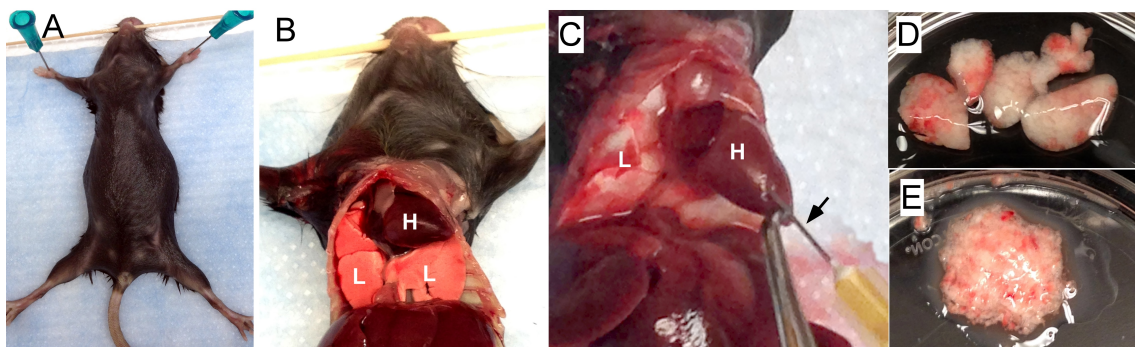
1. CO<sub>2</sub> tank
2. Scissors
3. Forceps
4. Water bath
5. Cell culture incubator
6. Rocker
7. Refrigerated Swing bucket centrifuge (Beckman Coulter, model: Allegra X-12R)

8. Vortex
9. Hemocytometer
10. Mouse restrainer
11. Heat lamp
12. Pipette
13. Compound microscope
14. MACS separator (Miltenyi Biotec)

## Procedure

### A. Preparing single cell suspension from the lungs of donor mice

1. Euthanize mice with CO<sub>2</sub>. Cut the rib cage to expose both the heart and lungs (Figures 1A and 1B).
2. To remove blood cells from the lung, perfuse the lungs with 3-5 ml PBS using a 23 gauge needle via the right ventricle of the heart (Figure 1C). Gently inject PBS till the color of lungs turns to white. Note that redness may maintain throughout perfusion in areas inflamed or injured.
3. Excise the lung lobes (total 5 per mouse, Figure 1D) and place them in a 60 x 15 mm Petri dish with approximately 1 ml cold PBS and store on ice until all the lungs are harvested from all the mice.
4. Remove lungs from PBS and mince with scissors in the lid of the Petri dish until the consistency of applesauce; keep lungs from each mouse separate (Figure 1E).



**Figure 1. Preparing lung tissue.** A. Pin a euthanized mouse on a plastic foam board. B. Cut the rib cage to expose both the heart (H) and the lungs (L). C. Perfuse the lungs by injecting PBS into the right ventricle of the heart. The black arrow points to the needle inserting into the heart. D. Lung lobes (5) are removed and placed in a Petri dish with cold PBS. E. The lungs are minced.

5. Rinse the scissors and the Petri dish with 15 ml collagenase digest solution (see Recipes below) and place into a 50 ml conical centrifuge tube.

6. Close the tubes and incubate the tubes for 5 min in a 37 °C water bath and then for 30 min in a 37 °C incubator on a rocker.
7. Using a 10 ml slip tip syringe, draw the sample up and down 20 times to disperse cells.
8. Centrifuge for 10 min at 200 x g (*i.e.*, 1,000 rpm) in a swing bucket centrifuge.
9. Aspirate the supernatant and discard; break up the pellet by vortexing gently.
10. Add 3 ml cold RBC lysis buffer (NH<sub>4</sub>Cl, see Recipes below) per sample to lyse red blood cells, incubate on ice 2-3 min.
11. Add 10 ml cold complete media (see Recipes) to each tube to stop lysis and pellet again at 200 x g for 10 min at 4 °C.
12. Aspirate supernatant, break up the pellet, and add 5 ml serum-free media (see Recipes) to resuspend the cells.
13. Cut tip off syringe tip cap with razor blade and place it on a 10 ml slip tip syringe (this is to make the syringe tip a little longer for dispersing the volume smaller than 5 ml. Draw the sample up and down 20 times to disperse cells.
14. Draw up the solution into the syringe and filter through a sterile 100 µm nylon screen. Rinse the screen with an additional 5 ml of complete media.
15. Add 10 ml 40% Percoll in complete media. Mix well by inverting the tubes 5 times and centrifuge for 20 min at 1,800 x g (*i.e.*, 3,000 rpm), turn off brake.
16. Aspirate supernatant and discard; break up pellet with 10 ml of complete media. Count cells with trypan blue exclusion on a hemocytometer.

*Note: We usually recover 16-17 million cells/naïve mouse.*

## B. Lung APC enrichment

*Note: In our hands, the yield of lung APCs is usually about 5% of total cells in the lung single cell suspension. One may roughly calculate a starting total lung cell number in order to obtain enough lung APCs for his/her experiments.*

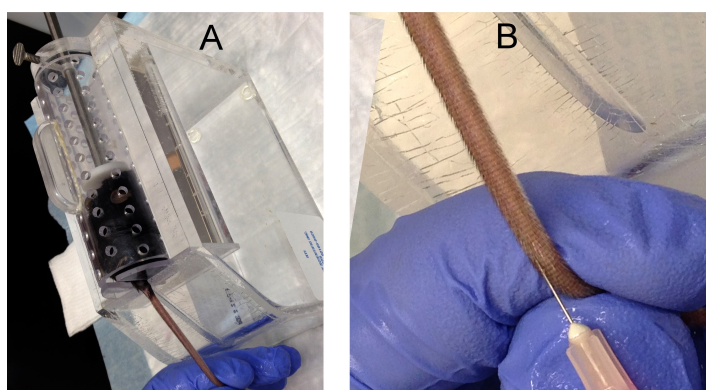
1. Centrifuge single cell suspension for 10 min at 200 x g and aspirate supernatant and discard.
2. Resuspend cell pellet in 400 µl of cold MACS buffer (see Recipes) for less than or equal to 10<sup>8</sup> total lung cells and add 100 µl of CD11c MicroBeads. Scale up buffer and beads if more than 10<sup>8</sup> total cells.
3. Mix well and incubate for 15 min in the refrigerator (2-8 °C). Note that working on ice may require a longer incubation time.
4. Wash cells with 10 ml cold MACS buffer per 10<sup>8</sup> cells and centrifuge at 200 x g for 10 min at 4 °C.
5. Aspirate supernatant and then resuspend cell pellet in 500 µl of MACS buffer.
6. Place column in the magnetic field of a MACS LS column. Prepare column by rinsing with 3 ml MACS buffer.

7. Place a sterile 100  $\mu$ m nylon screen on the column. Apply cell suspension onto the column by filtering through the nylon screen. Collect flow-through containing unlabeled cells in a 15 ml conical centrifuge tube.
8. Wash column with 3 ml of MACs buffer and collect unlabeled flow-through cells. Wash 3 times.
9. Remove column from the separator and place it over a new 15 ml conical centrifuge tube.
10. Pipette 5 ml of buffer on the column. Immediately flush out the magnetically labelled cells by firmly pushing the plunger into the column.
11. Centrifuge enriched CD11c<sup>+</sup> cells at 200  $\times$  g for 10 min and discard supernatant.
12. Wash cells by gently breaking up the pellet with 10 ml serum free medium. Count cells with trypan blue exclusion on a hemocytometer. Note, usually recover 1-2 million APCs/mouse.
13. Centrifuge at 200  $\times$  g for 10 min and discard supernatant. Resuspend cells in appropriate volume of serum-free medium to reach a final concentration of  $1 \times 10^6$  cells per 200  $\mu$ l.

C. Adoptive transfer of lung APCs into recipients via intravenous injection

*Note: Adoptive transfer can also be achieved by intratracheal administration (for detailed protocol of intratracheal administration, please refer to Ortiz-Muñoz and Looney, 2015, Bio-protocol).*

1. Load cell suspension into a 1 ml syringe with 26 G needle. Make sure to remove air bubbles.
2. Place recipient mouse in a plastic mouse restrainer and warm the tail with a heat lamp for about one minute (Figure 2A).
3. Immobilize the tail with gentle traction (Figure 2A).
4. Spray the tail with 70% ethanol to visualize the lateral tail vein and rotate the tail  $\frac{1}{4}$  turn for easier injection.
5. At the distal portion of the tail, insert needle parallel to the vein 2 to 5 mm into to the lumen (Figure 2B).
6. Inject  $1 \times 10^6$  cells in 200  $\mu$ l per mouse. Inject the cell suspension slowly. The cell suspension should flow easily if needle is properly located.



**Figure 2. Tail vein injection.** A. A recipient mouse is placed in a restrainer. B. Insert a needle into a mouse tail vein to inject cells.

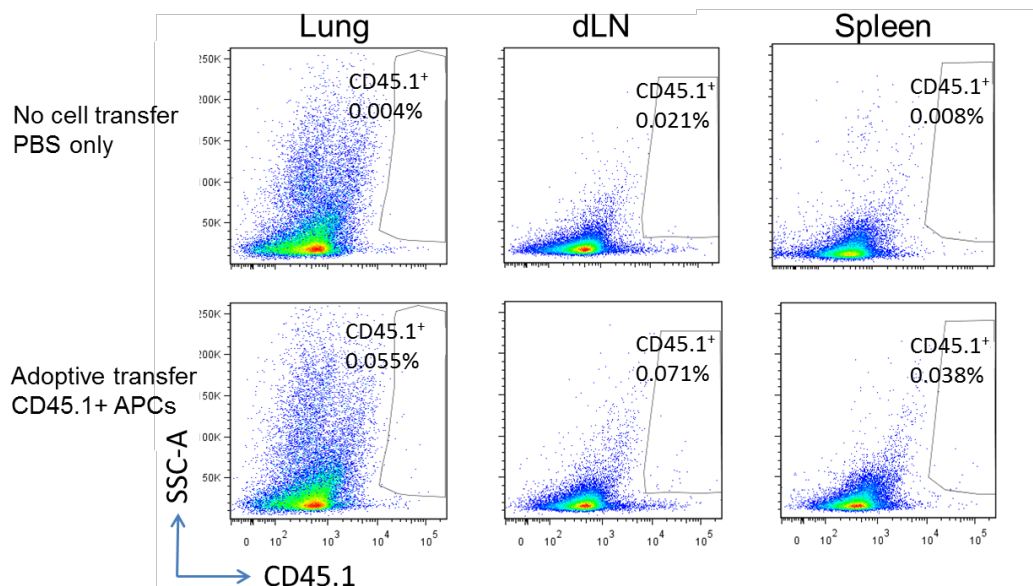


7. Withdraw the needle and apply pressure to prevent bleeding.
8. Place the recipient mouse back into its cage.
9. Mice may then receive designated treatments and can be analyzed at appropriate time points.

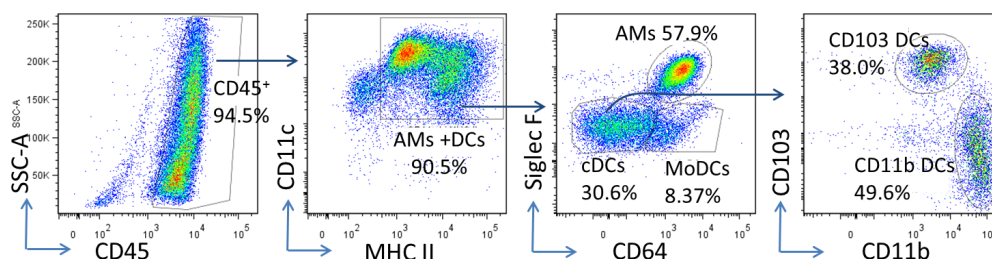
## Data analysis

Single cell suspension was prepared from the lungs of C57BL/6 mice three days post infection of murine gamma herpesvirus 68 (MHV-68) intranasal at a dose of  $5 \times 10^4$  pfu/mouse (Zhou *et al.*, 2016). CD11c<sup>+</sup> cells were then enriched by using anti-mouse CD11c microbeads. To analyze the composition of these microbead-enriched cells by flow cytometry, appropriate fluorescence-conjugated antibodies were used to stain cell surface markers. Percentages on each plot represent the percentages of each parental gate. Similar results were obtained in two additional independent experiments. The majority enriched CD11c<sup>+</sup> APCs are alveolar macrophages (AMs) (CD45<sup>+</sup> CD11c<sup>+</sup> MHC II<sup>int</sup> CD64<sup>hi</sup>), and DCs. The DC population can be further separated into CD103 cDCs (CD45<sup>+</sup> CD11c<sup>+</sup> MHC II<sup>hi</sup> CD64<sup>-</sup> CD103<sup>hi</sup> CD11b<sup>int</sup>), CD11b<sup>+</sup> cDCs (CD45<sup>+</sup> CD11c<sup>+</sup> MHC II<sup>hi</sup> CD64<sup>-</sup> CD103<sup>lo</sup> CD11b<sup>hi</sup>) and MoDCs (CD45<sup>+</sup> CD11c<sup>+</sup> MHC II<sup>hi</sup> CD64<sup>+</sup> CD103<sup>lo</sup> CD11b<sup>hi</sup>) (Misharin *et al.*, 2013; Wang *et al.*, 2006) (Figure 3) .

Lung APCs were prepared from congenic CD45.1 mice three days post infection of MHV-68, and adoptively transferred into wild-type C57BL/6 mice (CD45.2<sup>+</sup>, but CD45.1<sup>-</sup>). The recipients were infected with MHV-68 24 h after cell transfer, and euthanized for flow cytometry analysis 48 h after cell transfer. Representative flow cytometry plots show donor CD45.1<sup>+</sup> APCs in the lungs, lung draining lymph nodes (dLN) and spleens of CD45.1<sup>-</sup> recipients (Figure 4).



**Figure 3. Representative flow cytometry plots of APCs isolated from mouse lungs**



**Figure 4. Tracking injected cells.** Upper panel, wild-type C57BL/6 mice without cell transfer; lower panel, wild-type C57BL/6 recipients adoptively transferred with CD45.1<sup>+</sup> lung APCs.

## Notes

If CD11c<sup>+</sup> subpopulations are under investigation, the magnetically enriched cells can be further stained with appropriate fluorescence-conjugated antibodies and sorted to specific APC populations using fluorescence-activated cell sorting (FACS) (Misharin *et al.*, 2013).

## Recipes

1. Complete media  
Mix the following solutions and filter through 0.22  $\mu$ m filter:  
50 ml heat-inactivated fetal bovine serum  
5 ml 100x penicillin-streptomycin (10,000 IU penicillin and 10,000  $\mu$ g/ml streptomycin)  
5 ml 100x L-glutamine (200 mM)  
0.5 ml amphotericin B (250  $\mu$ g/ml)  
Add the filtered mixture into a 500 ml bottle of DMEM media
2. Collagenase digest solution (per mouse, prepare immediately before use)  
15 mg collagenase A  
0.25 ml DNase I (250 Kunitz unit)  
15 ml complete media
3. RBC lysis buffer  
Dissolve the following in 800 ml distilled H<sub>2</sub>O  
8.3 g NH<sub>4</sub>Cl  
1.0 g KHCO<sub>3</sub>  
1.8 ml of 5% EDTA  
Add distilled H<sub>2</sub>O up to a total volume of 1,000 ml  
Filter sterilize through a 0.22  $\mu$ m filter, and keep in refrigerator
4. Serum free media  
500 ml DMEM media  
5 ml 10% BSA

5 ml 100x penicillin-streptomycin (10,000 IU penicillin and 10,000 µg/ml streptomycin)

5 ml 100x L-glutamine (200 mM)

0.5 ml amphotericin B (250 µg/ml)

Store in refrigerator (4-8 °C)

5. MACS buffer

For 150 ml solution:

7.5 ml of 10% bovine serum albumin (BSA)

0.6 ml of 0.5 M EDTA

Store in refrigerator (4-8 °C)

## **Acknowledgments**

This protocol was adapted from our publication (Zhou *et al.*, 2016). This work was supported by NIH grants AI117229, HL115618, T32HL07749 and 2UL1TR000433.

## **References**

1. Becher, B., Schlitzer, A., Chen, J., Mair, F., Sumatoh, H. R., Teng, K. W., Low, D., Ruedl, C., Riccardi-Castagnoli, P., Poidinger, M., Greter, M., Ginhoux, F. and Newell, E. W. (2014). [High-dimensional analysis of the murine myeloid cell system](#). *Nat Immunol* 15(12): 1181-1189.
2. Kopf, M., Schneider, C. and Nobs, S. P. (2015). [The development and function of lung-resident macrophages and dendritic cells](#). *Nat Immunol* 16(1): 36-44.
3. Misharin, A. V., Morales-Nebreda, L., Mutlu, G. M., Budinger, G. R. and Perlman, H. (2013). [Flow cytometric analysis of macrophages and dendritic cell subsets in the mouse lung](#). *Am J Respir Cell Mol Biol* 49(4): 503-510.
4. Ortiz-Muñoz, G. and Looney, M. R. (2015). [Non-invasive intratracheal instillation in mice](#). *Bio-protocol* 5(12): e1504.
5. Wang, H., Peters, N., Laza-Stanca, V., Nawroly, N., Johnston, S. L. and Schwarze, J. (2006). [Local CD11c<sup>+</sup> MHC class II<sup>+</sup> precursors generate lung dendritic cells during respiratory viral infection, but are depleted in the process](#). *J Immunol* 177(4): 2536-2542.
6. Zhou, X., Loomis-King, H., Gurczynski, S. J., Wilke, C. A., Konopka, K. E., Ptaschinski, C., Coomes, S. M., Iwakura, Y., van Dyk, L. F., Lukacs, N. W. and Moore, B. B. (2016). [Bone marrow transplantation alters lung antigen-presenting cells to promote TH17 response and the development of pneumonitis and fibrosis following gammaherpesvirus infection](#). *Mucosal Immunol* 9(3): 610-620.