

Mouse Subependymal Zone Explants Cultured on Primary Astrocytes

Ionut Dumitru, Hannah Monyer and Julieta Alfonso*

Department of Clinical Neurobiology at the German Cancer Research Center (DKFZ) and the Medical Faculty of the Heidelberg University, Heidelberg, Germany

*Correspondence: j.alfonso@dkfz-heidelberg.de

[Abstract] Neuroblast migration is a major component in the process of neuronal circuit assembly. In the rodent postnatal brain, the subependymal zone (SEZ) is the largest neurogenic niche where new neurons are born throughout life. These cells migrate several millimeters following a specific pathway called the rostral migratory stream (RMS) towards the olfactory bulb. Once they reach their final destination, they differentiate mainly as interneurons and integrate into already established neuronal circuits. Along the RMS, neuroblasts use a particular mode of migration known as chain migration. They stay attached to each other while migrating and are intimately associated with adjacent astrocytic processes. To dissect the molecular and cellular signals involved in neuroblast migration, we developed an *in vitro* system consisting of SEZ-derived explants co-cultured on top of an astrocyte monolayer.

Materials and Reagents

1. 10 cm Petri dishes (Greiner Bio-One GmbH, catalog number: 664160)
2. 15-ml tube
3. 75 cm² plastic flasks (Sigma-Aldrich, Corning® CellBIND®, catalog number: CLS3290)
4. Glass coverslips (Marienfeld-superior 18 mm Φ)
5. 24-well plates (Sigma-Aldrich, Greiner Cellstar®, catalog number: M8812-100EA)
6. Breakable razor blades (Fine Science Tools, catalog number: 10050-00)
7. Puradisc 30 syringe filters (Whatman, Whatman®, catalog number: 10462200)
8. Animals: Wild-type C57BL/6 mice (Charles River)
Note: Animal care and procedures were according to local and international regulations for the use of experimental animals. Animal handling was performed by trained staff certified by the Federation of European Laboratory Animal Science Associations (FELASA).
9. Antibodies:
 - a. Goat anti-DCX (Santa Cruz Biotechnology, catalog number: sc-8066)
 - b. Mouse anti-GFAP (Sigma-Aldrich, catalog number: G-3893)
 - c. Anti-goat conjugated to Alexa Fluor 488 (Thermo Fisher Scientific, catalog number: A11055)
 - d. Anti-mouse conjugated to Alexa Fluor 647 (Thermo Fisher Scientific, catalog number: A31571)
10. Papain (Sigma-Aldrich, catalog number: P4762)
11. DNase I (Sigma-Aldrich, catalog number: D4513)

12. Dulbecco's modified Eagle's media (DMEM) (Thermo Fisher Scientific, catalog number: 41965039)
13. Fetal bovine serum (FBS), heat inactivated (Thermo Fisher Scientific, catalog number: 10270-106)
14. Trypsin-EDTA (0.05%) (Thermo Fisher Scientific, catalog number: 25300-054)
15. Poly-L-lysine (Sigma-Aldrich, catalog number: P9155)
16. Neurobasal media (Thermo Fisher Scientific, 21103049)
17. 4% paraformaldehyde (PFA) (Carl Roth, catalog number: P087.3)
18. Phosphate buffer saline (PBS)
19. PBS-Triton
20. Bovine Serum Albumin (BSA)
21. Mowiol (Sigma-Aldrich, catalog number: 324590)
22. NaCl (Sigma-Aldrich, catalog number: 31434-1KG-R)
23. KCl (AppliChem GmbH, catalog number: A1039)
24. Na₂HPO₄ (VWR International, Prolabo, catalog number: 28029.292)
25. KH₂PO₄ (GERBU Biotechnik, catalog number: 2018)
26. Glucose (Sigma-Aldrich, catalog number: G-7021)
27. HEPES (Carl Roth GmbH, catalog number: 9105.2)
28. B27 supplement (Thermo Fisher Scientific, 17504044)
29. L-glutamine (Thermo Fisher Scientific, catalog number: 25030-024)
30. Pen/Strep (Thermo Fisher Scientific, catalog number: 15140-122)
31. PBS-Glucose-HEPES (see Recipes)
32. Neurobasal complete media (see Recipes)
33. Dulbecco's modified Eagle's medium (DMEM)-10% serum (see Recipes)
34. Papain solution (see Recipes)
35. DNase I solution (see Recipes)

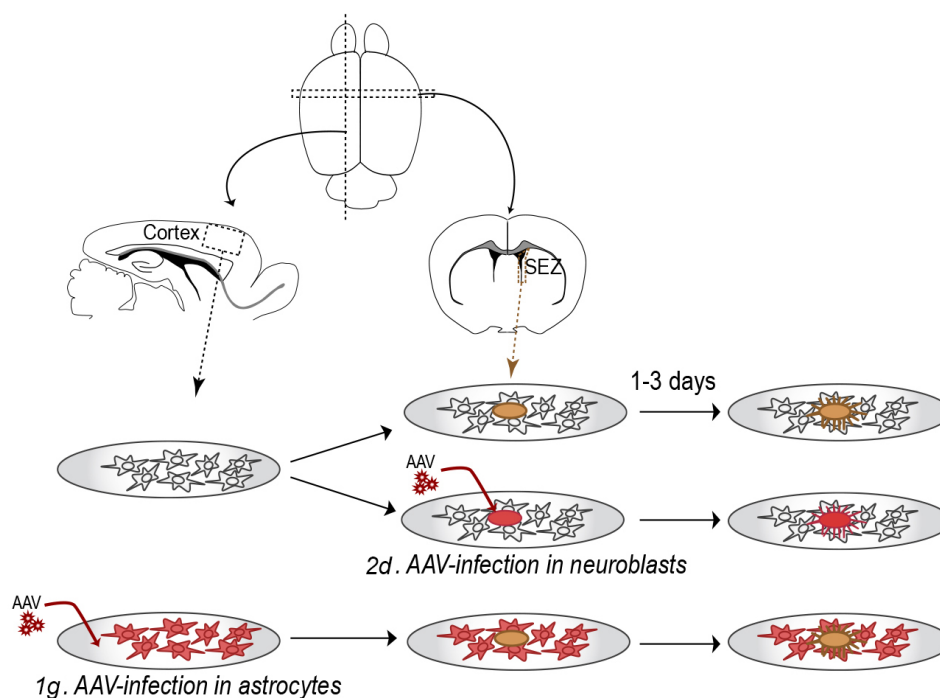
Equipment

1. Standard pattern scissors sharp/blunt 14,5cm (Fine Science Tools, catalog number: 14101-14)
2. Stereomicroscope (Carl Zeiss, model: STEMI SV 6) supplemented with a halogen light source (Schott KL, model: 1500 LCD)
3. Horizontal laminar flow bench (Azbil Telstar, model: H-100)
4. Biological safety cabinet (The Baker Company, model: SterilGARD e3)
5. Dumont #5 Forceps (Fine Science Tools, catalog number: 11251-20)
6. Graefe forceps-straight/serrated (Fine Science Tools, catalog number: 11050-10)
7. Neubauer chamber
8. Scalpel Handle #3-12 cm (Fine Science Tools, catalog number: 10003-12)
9. Scalpel Blades #15 (Fine Science Tools, catalog number: 10015-00)

10. 37 °C, 5% CO₂ incubator (Labotect, model: C200)
11. Bright field microscope
12. Confocal microscope (Carl Zeiss, model: LSM 700)

Procedure

An overview of the whole procedure is schematized in Figure 1.



1. Primary astrocyte culture 2. SEZ-explant plating 3. Neuroblast visualization

Figure 1. Summary of the complete procedure. Scheme of the steps described in the protocol, numbered as in the text (Procedure section).

1. Astrocyte monolayer preparation from cortical tissue

We use a modified version of the protocol previously described by Banker and Goslin (1991), as follows:

- a. Sacrifice P4-7 old mice by decapitation with sharp scissors. Remove the brains and transfer them to a sterile Petri dish with cold PBS-glucose-HEPES buffer under a stereomicroscope placed in a horizontal laminar flow bench.
- b. Remove the meninges with a fine forceps and dissect the cortex, mince it with a scalpel into small pieces of approx. 2 mm of diameter and transfer them to a 15-ml tube with PBS-glucose on ice. We use one tube per ~100-200 µl of tissue, normally we prepare 4 tubes in parallel and the cortex from one mouse is enough to obtain the material.

- c. Prepare papain (0.08%)/DNase I (0.001%) (final concentration) in 1 ml of PBS-glucose, add this solution to the tissues and incubate them for 3 min at 37 °C. Immediately pipette out the solution leaving the tissues on the bottom of the tube and wash them twice by adding 1 ml of DMEM-10% serum media at RT, decanting the tissue and removing the solution each time.
- d. Resuspend the tissue in DMEM-10% serum and to obtain a single cell suspension gently pipette up and down approx. 20 times with a 200- μ l tip until the solution appears homogeneous.

Note: In case some tissue pieces remain undigested, discard them from the cell suspension without further pipetting to avoid damaging the cells.

- e. Count the cells in a Neubauer chamber and plate them in 75 cm² plastic flasks at a density of 100,000 cells/ml in DMEM-10% serum. We plate 2×10^6 cells per flask (20 ml) and keep the cells in culture for at least one week before splitting. To split the cells remove the media and add 2 ml trypsin solution per flask. Incubate the flasks for 5 min at 37 °C and subsequently inactivate the trypsin with 10 ml DMEM-10% FBS. Detach the cells from the flask by stringently pipetting the media and pellet down by centrifugation for 5 min at 800 x g. Discard the media and replace it with 10 ml fresh DMEM-10% FBS.
- f. One day prior explant plating, re-plate the astrocytes on glass coverslips coated with poly-lysine (in a 24-well plate). Coating is performed by adding 200 μ l of poly-lysine solution on top of each coverslip placed inside a 24-well plate and incubating at 37 °C for 2-3 h. Afterwards the poly-lysine solution should be removed and the wells should be washed 3 times with 1 ml sterile PBS. Plate the astrocytes on the coverslips at a density of 35,000 cells/well in a volume of 150 μ l avoiding that the solution spills out of the glass. Wait until the cells attach (approx. 15 min) and add 350 μ l of media to each well.

Note: The astrocyte monolayer should be confluent at the time of plating the explants because neuroblasts migrate avoiding the empty surfaces.

- g. Manipulation of gene expression in astrocytes via AAV-viral infections
Specific gene overexpression or knockdown can be achieved by infecting the cells with recombinant adeno-associated viral (AAV) vectors. The viral backbone contains the sequence of the gene of interest under a general promoter (overexpression) or a shRNA sequence driven by the H1 or U6 promoter (knockdown). In addition, a fluorescent marker is expressed to identify the infected cells.
 - i. AAVs are generated with the packaging cell line HEK 293 transfected with the plasmid for the viral backbone and the helper plasmids pDP1 and pDP2. The viral particles are purified as previously described (Alfonso *et al.*, 2015). A detailed protocol can be found in McClure *et al.*, 2011.
 - ii. Infect 70% confluent astrocyte cultures growing in 10 cm plates with the virus by adding the viral solution in the media (1:10 final dilution, the titer of the virus was approx. 10^6 cfu/ μ l). Replace the media on the following day and keep the cells in culture for at least

6 days before re-plating in 24-well plates for explant plating. Normally, between 60-90% of the cells are infected with the virus. Alternatively, primary astrocytes can also be infected with lentivirus. Other methods like lipid-mediated transfection or electroporation can also be used to express an exogenous sequence although they usually have a lower efficiency.

2. SEZ dissection and explant plating

- a. Sacrifice P4-10 old mice by decapitation and remove their brains in cold PBS-glucose-HEPES buffer as before. Cut coronal slices of approx. 400 μ m at the level of the lateral ventricles (2 mm posterior to the end of the olfactory bulb) with a breakable scalpel blade and select the sections containing the SEZ (Figure 2A and 2B).
- b. Dissect out the wall of the ventricle with a scalpel (Figure 2C-E) and place it in a clean 10 cm Petri dish with PBS-glucose-HEPES on ice.

Note: This cut should be as close to the ventricle as possible avoiding that the dissected area contains parts of the striatum.

- c. Mince the tissue in small pieces of ~200-400 μ m diameter with a scalpel (Figure 2F), and either incubate them with an AAV-virus before plating (see step 2d), or immediately plate them on top of the primary astrocyte cultures prior replacement of the media with Neurobasal complete media. Plate 2-3 explants (distant from each other) per well (24-well plate) with a pipette (20 μ l tip) and carefully transfer the plate to the incubator avoiding shifting the tissues.

Note: The explants require approx. 4-6 h to attach to the surface, hence it is important to keep the plates in the incubator avoiding any handling during this time.

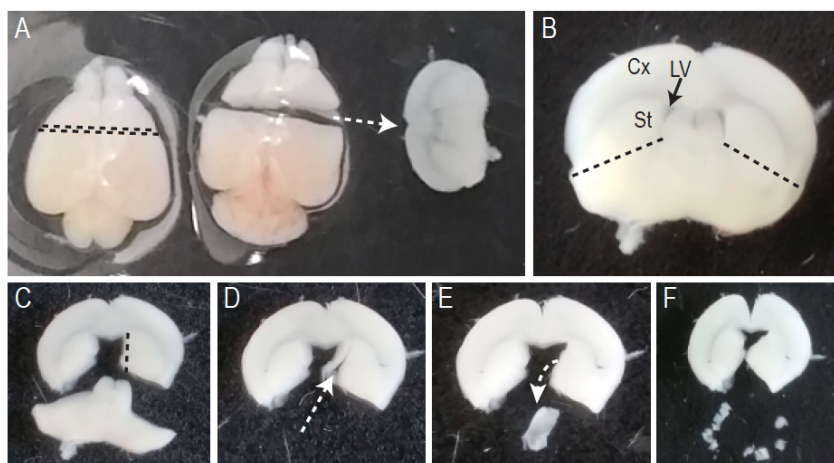


Figure 2. Dissection of SEZ-derived explants. A. A brain from a P6-old mouse was placed on a Petri dish and a coronal slice at the level of the lateral ventricles (indicated with the black dotted line) was dissected with a breakable scalpel blade. B. The brain section obtained in (A) was cut with a scalpel along the dotted line and the wall of the ventricle exposed (C) in order to allow its dissection from the brain slice (D and E). F. The dissected tissue was further cut into

small pieces, and was then ready to be plated on the coverslips containing the astrocyte cultures.
Cx: cortex, LV: lateral ventricle, St: striatum.

d. Manipulation of gene expression in neuroblasts via AAV-viral infections

- i. AAVs are generated as above (step 1g)
- ii. After the SEZ-explant dissection, place the small pieces of tissue (30-40 explants) in a Petri dish and cover them with ~20 μ l of purified virus (10^6 cfu/ μ l) for 15-20 min at room temperature. Dilute the viral solution by adding 200 μ l of PBS-glucose and plate the infected tissue as described above (step 2c). Check for positive infection with an inverted fluorescent microscope 2 days after plating. Normally, approx. 70% of the cells are infected with the virus.

3. Neuroblasts visualization

One day after plating, the explants are attached to the substrate and the neuroblasts migrating out of the tissue can be observed under a bright field microscope.

- a. Immunostaining: one to three days after plating, fix the explants by incubating the coverslips in 4% PFA (in PBS) for 30 min at room temperature, permeabilize in 1% PBS-triton for 15 min at RT, block with 3% PBS-BSA for at least 30 min at RT and incubate with goat anti-DCX (neuroblast marker, 1:500) and mouse anti-GFAP (astrocyte marker, 1:1,000) antibodies in 3% PBS-BSA overnight at 4 °C. Next day, wash the coverslips 3 times with PBS, incubate them with the secondary antibodies anti-goat conjugated to Alexa Fluor 488 (1:1,000) and anti-mouse conjugated to Alexa Fluor 647 (1:1,000) for 1 h at RT, wash again 3 times with PBS and mount in Mowiol mounting medium.
- b. Image acquisition: the immunostainings can be imaged with a confocal microscope using a 20x objective and the tile-scan function (see examples in Figure 3).

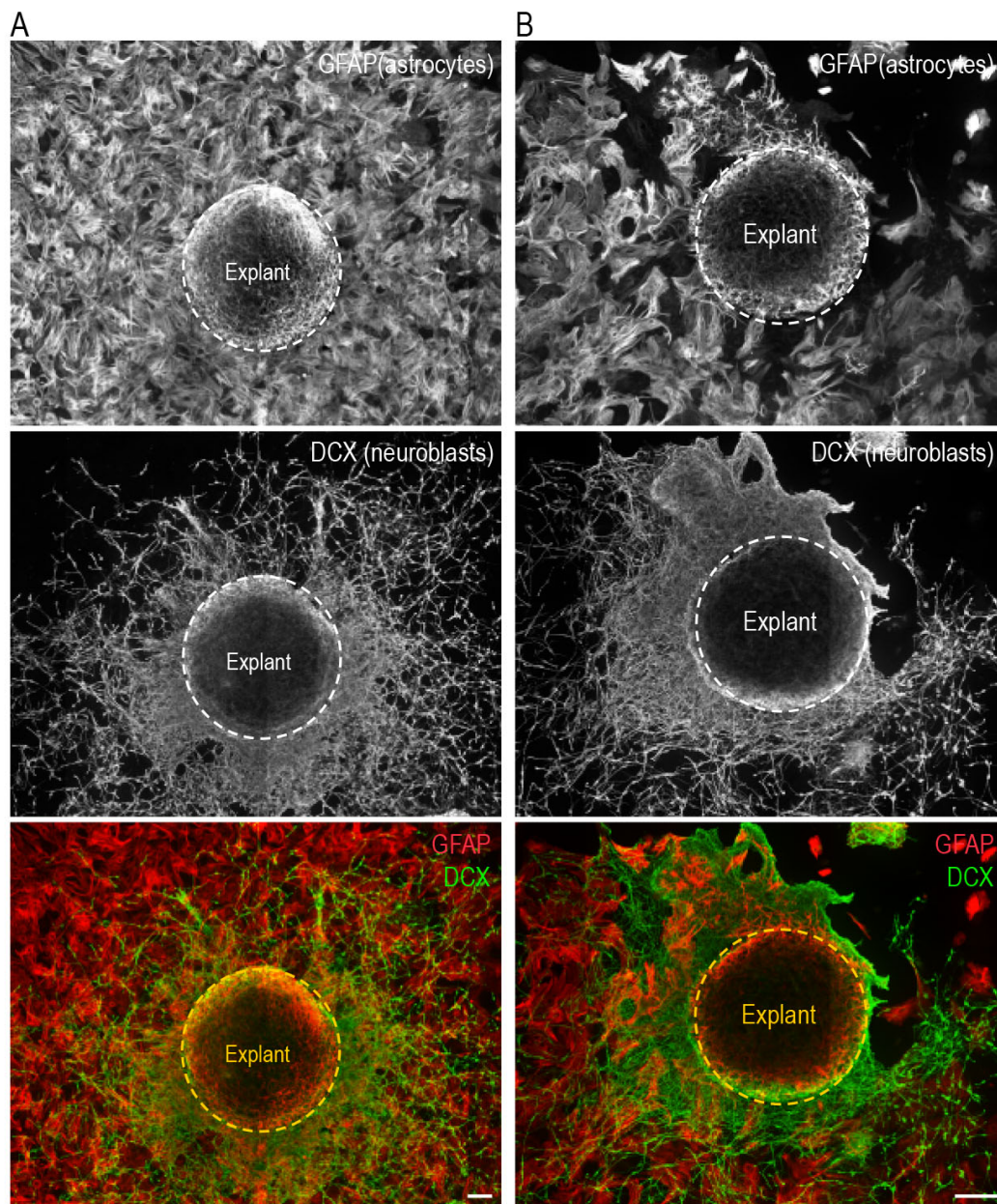


Figure 3. SEZ-derived explants on astrocytes cultures. Coverslips homogeneously (A) or irregularly (B) covered by astrocytes were used as a substrate for SEZ-derived explants. Two days after plating, the cells were stained with antibodies against the astrocyte marker GFAP and the neuroblast marker DCX, as indicated in the pictures. Note that neuroblasts do not migrate over areas devoid of astrocytes. Scale bars: 100 μ m.

Representative data

Different parameters can be measured once the neuroblasts have migrated out of the explant:

1. Mode of migration: we measured whether the cells migrated as single cells or contacting each other since cell-cell adherence among neuroblasts is important to maintain the integrity of the chains during chain migration (Figure 4A and 4B).
2. Efficiency of migration: we measured the distance migrated by the neuroblasts from the explant (Figure 4A and 4C).

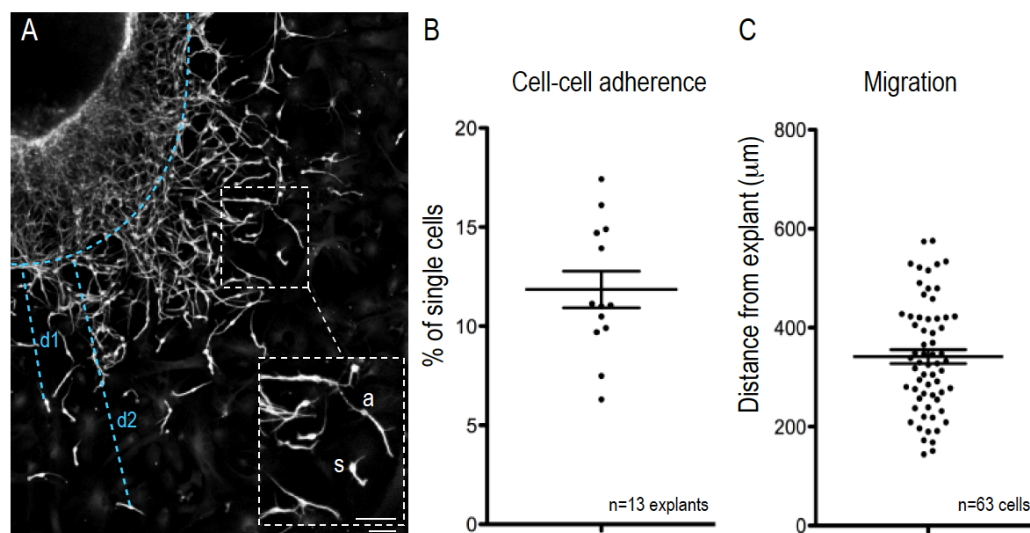


Figure 4. Cell-cell adherence and distance migrated by neuroblasts. A. Picture of an explant one day after plating stained with anti-DCX antibodies. Blue lines show examples of the distance measured from the explant for two neuroblasts (d1 and d2). The inset is an enlargement of the boxed area showing an example of a neuroblast migrating as single cell (s) and another one associated with other neuroblasts (a). B. Quantification of the percentage of cells migrating as single cells for 13 explants. C. Quantification of the distance covered by the neuroblasts in one explant. Scale bars: 50 μ m.

Notes

1. In our hands, the reproducibility of the technique is high as long as the dissection is precise. It is crucial to dissect only tissue from the wall of the ventricle to prepare the explants since contaminating tissue from adjacent brain areas does not contain neuroblasts. In a standard experiment plating 3 explants per well in a 24 well plate, we expect to obtain migrating neuroblasts in at least 20 wells.

Recipes

1. PBS-Glucose-HEPES
8 g NaCl
0.2 g KCl

1.44 g Na₂HPO₄

0.24 g KH₂PO₄

6 g glucose

7.38 g HEPES

Dissolve in double-distilled water (1 L final volume), adjust pH at 7.38 and sterilize by autoclaving.

The solution can be stored at 4 °C for up to 8 weeks.

2. Neurobasal complete media

483.75 ml Neurobasal Media

10 ml B27 supplement

1.25 ml L-glutamine

5 ml Pen/Strep

Solution must be prepared sterile.

The solution can be stored at 4 °C for up to 6 weeks.

3. Dulbecco's modified Eagle's medium (DMEM)-10% serum

443.75 ml DMEM

50 ml FBS (heat inactivated)

1.25 ml L-glutamine

5 ml Pen/Strep

Solution must be prepared sterile.

The solution can be stored at 4 °C for up to 6 weeks.

4. Papain solution

100.2 mg Papain

20 mg cysteine

20 mg EDTA

To be dissolved in 60 ml PBS and filter sterilized using a 0.2 µm Filter.

The solution can be stored at -20 °C for up to 6 months.

5. DNase I solution

14.2 mg solid DNase I

To be dissolved in 14.2 ml bidistilled water and filter sterilized using a 0.2 µm Filter.

The solution can be stored at -20 °C for up to 6 months.

Acknowledgments

This protocol was successfully used and described in a shorter version in the published studies Alfonso *et al.*, 2015 and Le Magueresse *et al.*, 2012. We thank J. Friemann and R. Hinz-Herkommer for excellent technical assistance. This work was supported by the German Federal Ministry for Education and Research (Grant BMBF 01GQ1405 to J.A.).

References

1. Alfonso, J., Penkert, H., Duman, C., Zuccotti, A. and Monyer, H. (2015). [Downregulation of Sphingosine 1-Phosphate Receptor 1 Promotes the switch from tangential to radial migration in the OB.](#) *Journal of Neuroscience* 35(40): 13659-13672.
2. Banker, G. and Goslin, K. (1991). [Culturing nerve cells.](#) *Cambridge (MA): MIT Press.*
3. Le, Magueresse, C., Alfonso, J., Bark, C., Eliava, M., Khrulev, S. and Monyer, H. (2012). [Subventricular zone-derived neuroblasts use vasculature as a scaffold to migrate radially to the cortex in neonatal mice.](#) *Cerebral Cortex* 22(10): 2285-2296.
4. McClure, C., Cole, K. L., Wulff P., Klugmann, M. and Murray, A. J. (2011). [Production and titering of recombinant adeno-associated viral vectors.](#) *J Vis Exp* 27:e3348.