

## Protocol to Treat Seedlings with Brassinazole and Measure Hypocotyl Length in *Arabidopsis thaliana*

Ana Espinosa-Ruiz, Cristina Martínez and Salomé Prat\*

Departamento de Genética Molecular de Plantas, Centro Nacional de Biotecnología-CSIC,  
Campus Universidad Autónoma de Madrid, Madrid, Spain

\*For correspondence: [sprat@cnb.csic.es](mailto:sprat@cnb.csic.es)

**[Abstract]** The plant hormones brassinosteroids (BR) promote hypocotyl elongation of *Arabidopsis thaliana* (*A. thaliana*) seedlings both under light and dark (etiolated) conditions. A common assay to determine if a mutant or transgenic line is affected in BR biosynthesis or response is a sensitivity assay to brassinazole (BRZ), an inhibitor of P450 cytochromes specific to BR biosynthesis.

Here we provide a protocol to compare BRZ sensitivity of different *A. thaliana* genotypes in terms of hypocotyl elongation (Bernardo-García *et al.*, 2014).

### **Materials and Reagents**

1. *A. thaliana* seeds (background ecotype and mutant or transgenic line to be analysed)  
*Note: Seeds should be collected at the same time to avoid problems of differential germination rate.*
2. Murashige and Skoog (MS) media including vitamins and MES buffer (Duchefa M0255.0050)
3. Sucrose
4. Potassium hydroxide (KOH)
5. Bacto Agar (BD Bioscience, catalog number: 214010)
6. Ethanol
7. Tween-20
8. Brassinazole (TCI America, catalog number: B2829)  
*Note: Stock solution is prepared at 2 mM in DMSO and kept at -20 °C. The appropriate volume of BRZ stock solution should be added in the fume hood to autoclaved media. The media should not be too hot (let it cool down to 55-65 °C before adding BRZ). BRZ concentration should range from 0.1 to 2 µM. We routinely use 0.1, 0.2, 0.4, 0.8 and 1.6 µM as a starting point.*
9. Growth media (see Recipes)
10. Sterilization solution (see Recipes)

## **Equipment**

1. Plant growth chamber
2. Sterile fume hood
3. Autoclave
4. Round (9 x 9 cm) and square (12 x 12 cm) polystyrene sterile Petri dishes

## **Software**

1. ImageJ software

## **Procedure**

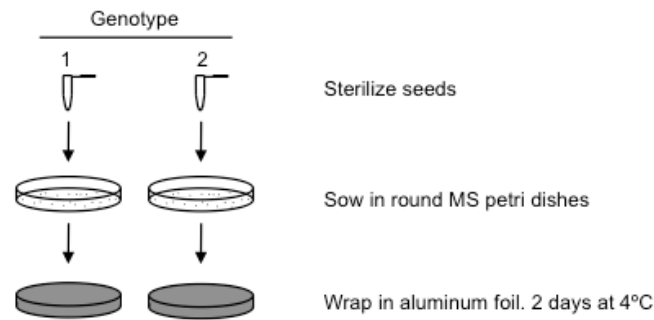
### **A. Seed sterilization and sowing**

1. Seeds are surface sterilized in 1.5 ml Eppendorf tubes by shaking for 15 min at 500-1,000 rpm at room temperature with 1 ml sterilization solution, and then washed twice in the sterile fume hood with 1 ml ethanol. Ethanol should be carefully removed with a p1000 pipette. Then close the tube and shake it to stick the seeds to the tube walls and remove ethanol from the tube bottom with a p200 pipette. After carefully removing ethanol, Eppendorf tubes are left open in the fume hood until the seeds are dry (30 min-1 h). Up to 50 µl seeds can be sterilized per tube. For bigger amount of seeds, divide them in several tubes. Drying time increases with larger amounts of seeds. To verify seeds are dry close the tube and shake gently. Dry seeds do not stick to the tube.
2. Sterile seeds are sown in round 9 cm MS plates and vernalized for 2-4 days in the dark at 4 °C. Seeds are easily sown by gently tapping in the Eppendorf tube to let them drop in the plate. If many seeds stick together, they can be separated with the help of a sterile toothpick. Up to 200 seeds can be sown per plate. Plates are sealed with parafilm or saran wrap.

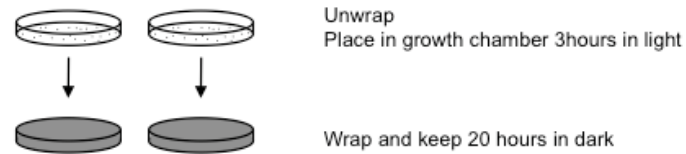
### **B. Germination induction and transfer to BRZ vertical plates**

1. To synchronize germination, 9 cm MS plates are placed horizontally in a culture chamber in the light for 3 h and then wrapped in aluminium foil and kept in dark for 20 h. This step is necessary because BRZ, at higher concentrations, inhibits germination and can give rise to differences in hypocotyl length due to slower germination.

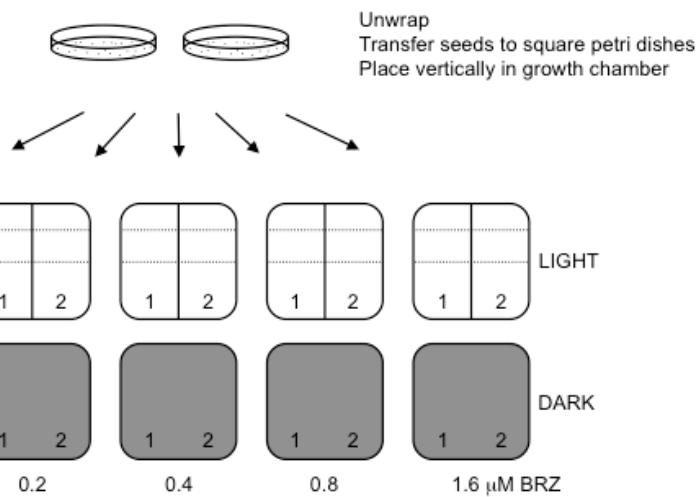
**Day 1**



**Day 3**



**Day 4**

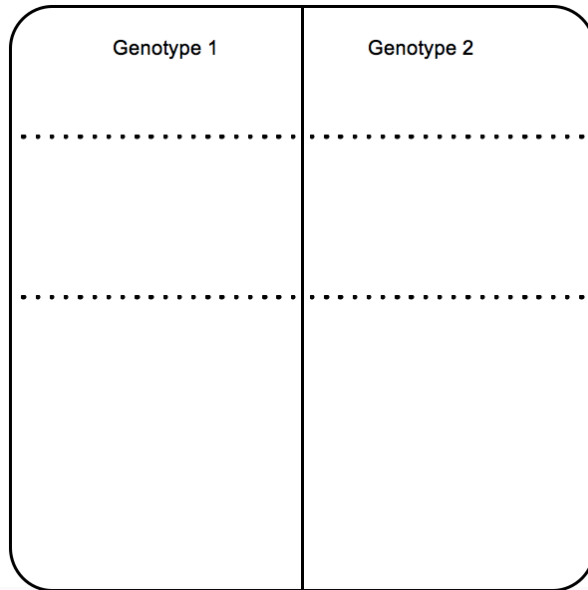


**Day 9** Unwrap DARK set. Take pictures and measure hypocotyls

**Day 11** Take pictures and measure hypocotyls of the LIGHT set

**Figure 1. A flow chart of the steps described in our procedure**

- After germination induction, seeds are transferred to square 12 cm MS plates with increasing concentrations of BRZ keeping a control plate without BRZ (mock). Using a toothpick, seeds are transferred to square 12 cm petri dishes with appropriate concentration of BRZ. At least 20 seeds from each genotype are needed, with three replicates for each treatment. Each plate can accommodate up to 40 seeds per row. Seeds should be placed equally separated. One or two rows can be sown per plate. It can be useful to use a template (a piece of paper placed under the petri dish) (Figure 2).



**Figure 2. Template to help placing the seeds equally separated in the plate**

3. Square 12 cm petri dishes are placed in a vertical position in a growth chamber. To analyse etiolated growth, wrap them in aluminium foil and unwrap after 5 days to take pictures and measure hypocotyls. To analyse growth in the light, seedlings are grown for 7 days.

Hypocotyl length is affected by light intensity, photoperiod and temperature. Higher light intensity, longer photoperiods and high temperature promote hypocotyl growth.

To assess the effect of BRZ, we use the following conditions:

Photoperiod: Short day (8 h light/16 h darkness)

Light intensity: 10  $\mu\text{mol m}^{-2} \text{s}^{-1}$

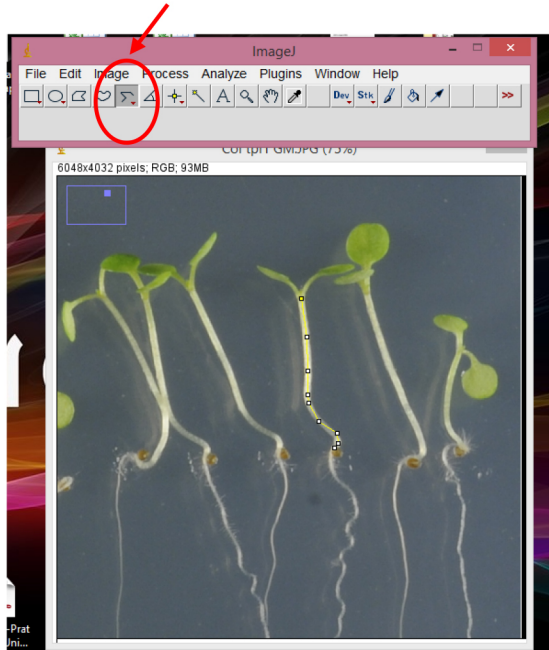
Temperature: Constant 22 °C

#### C. Hypocotyl measurement and analysis

1. To measure hypocotyls, the plates can be photographed or scanned. Hypocotyl lengths are measured with ImageJ software (<http://rsb.info.nih.gov/ij/>) (Abràmoff *et al.*, 2004).

For details on how to use ImageJ please read the following protocol (Corrales *et al.*, 2014).

To measure hypocotyls, choose the “segmented line” option (right-click in the highlighted button, Figure 3).

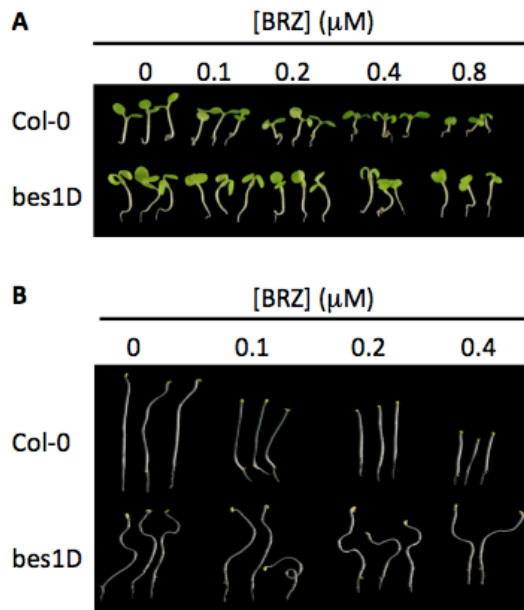


**Figure 3. Snapshot from ImageJ program showing hypocotyl measurement**

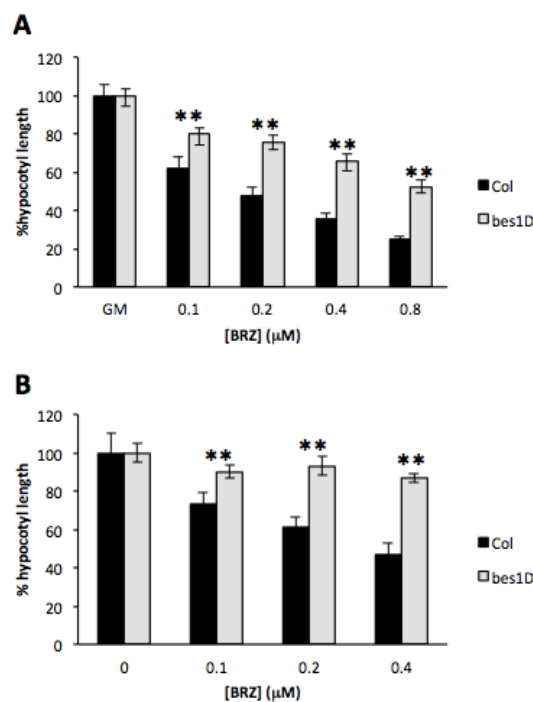
2. A graph bar is used to represent the media and standard deviation of each genotype and treatment measurement (Figure 5).
3. Statistical analyses are carried out by one-way analysis of variance (ANOVA) followed by a Student's *t*-test ( $P < 0.01$ ).
4. If compared genotypes show different hypocotyl length in control MS mock media, sensitivity to BRZ should be represented as the percentage of hypocotyl length reduction relative to control conditions.

### **Representative data**

Representative data showing hypocotyl measurements of type Col-0 and *bes1D* mutant are shown in Figures 4 and 5. BES1 is a transcription factor essential for BL response. *bes1D* mutation renders a constitutively active form of BES1. *bes1D* plants display constitutive response to BL and therefore are less sensitive to BRZ.



**Figure 4.** 7-days old Col-0 and *bes1D* seedlings grown under light (A) and dark conditions (B) in the indicated BRZ concentrations



**Figure 5.** BRZ sensitivity of Col-0 and *bes1D* estimated by determining hypocotyl length reduction by increasing BRZ concentrations under light (A) and dark conditions (B). Error bars represent standard deviation. Asterisks indicate significant differences between Col-0 and *bes1D* for each BRZ concentration (n = 20, p < 0.01).

## **Recipes**

### 1. Growth media

2.45 g/L Murashige and Skoog media (half strength)

10 g/L sucrose

Water to final volume

Adjust pH to 5.8 with 0.5 M KOH

Add Bacto agar to 8 g/L (horizontal plates, 9 cm round) or 11 g/L (vertical plates, 12 cm square)

Autoclave

Let the media cool down to 55-65 °C before adding BRZ and pour the plates.

Pour approximately 25 ml of growth media per round 9 cm petri dishes and 50 ml of growth media per 12 cm square petri dishes.

### 2. Sterilization solution

70% ethanol

0.01% Tween 20

## **Acknowledgements**

We gratefully acknowledge funding through grants BIO2008-04160 and BIO2011-30546 from the Spanish Ministry of Science and Innovation.

## **References**

1. Abràmoff, M. D., Magalhães, P. J. and Ram, S. J. (2004). [Image processing with ImageJ](#). *Biophot Internat* 11(7): 36-43.
2. Bernardo-García, S., de Lucas, M., Martínez, C., Espinosa-Ruiz, A., Davière, J.-M. and Prat, S. (2014). [BR-dependent phosphorylation modulates PIF4 transcriptional activity and shapes diurnal hypocotyl growth](#). *Genes Dev* 28(15): 1681-1694.
3. Corrales, A. R., Carrillo, L., Nebauer, S. G., Renau-Morata, B., Sánchez-Perales, M., Fernández-Nohales, P., Marqués, J., Granell, A., Pollmann, S., Vicente-Carbajosa, J., Molina, R. V. and Medina, J. (2014). [Salinity assay in Arabidopsis](#). *Bio-protocol* 4(16): e1216.