

## Immunofluorescence Labeling of Pollen Tubes

Hao Wang\* and Liwen Jiang\*

School of Life Sciences, The Chinese University of Hong Kong, Hong Kong, China

\*For correspondence: wanghaohw@gmail.com; [ljjiang@cuhk.edu.hk](mailto:ljjiang@cuhk.edu.hk)

**[Abstract]** Pollen tube is regarded as an excellent single-cell model system in plant cell studies. This protocol describes the use of a rapid and reliable immunofluorescence labeling method for studying *in situ* localization of proteins in pollen tubes. The whole experiment contains two major steps: pollen tube *in vitro* germination, and pollen tube fixation and immunolabeling. It takes about 2 days from pollen tube germination to immunofluorescence detection.

### Materials and Reagents

1. Lily, tobacco or *Arabidopsis* pollen tubes  
*Note: Generally, mature lily and tobacco pollen grains are harvested 1-2 days after they are completely released from the anthers of flowers (Wang et al., 2010). For Arabidopsis, day-0 flowers are used for pollen collection (Boavida and McCormick, 2007).*
2. 1% glutaraldehyde
3. 0.1% pectinase (Worthington Biochemical, catalog number: LS004298)
4. 1% cellulose (EMD Millipore, catalog number: 219466)
5. 1x phosphate buffered saline (PBS)
6. 0.1% NaBH<sub>4</sub> (INTERNATIONAL LABORATORY USA, catalog number: 1528397)
7. Primary antibody
8. Secondary antibody
9. Bovine serum albumin (BSA) (Sigma-Aldrich, catalog number: A-7906)
10. Sodium azide (Sigma-Aldrich, catalog number: S-2002)
11. NP-40 (IGEPAL CA-630) (Sigma-Aldrich, catalog number: I-8896)
12. Gelatin (Sigma-Aldrich, catalog number: 48723-F)
13. Blocking buffer 1 (see Recipes)
14. Blocking buffer 2 (see Recipes)
15. Pollen species-specific germination media and culture conditions (see Recipes)

### Equipment

1. Centrifuge with free angle rotor (Eppendorf, model: 5810R)

2. 0.22  $\mu$ m syringe filter (Merck Millipore, catalog number: SLGV033NS)
3. Confocal microscope (Leica Microsystems, model: TCS SP8)
4. Incubator
5. Confocal dish (cover glass-bottom dish) (Life Scientific, catalog number: SPL-100350)

## **Procedure**

### **A. *In vitro* pollen tube germination**

1. Lily, tobacco or *Arabidopsis* pollen tubes are *in vitro* germinated according to the methods described before (Wang and Jiang, 2011; Wang *et al.*, 2013). In general, freshly harvest anthers from 1 lily (*Lilium longiflorum*) flower, 10-15 tobacco (*Nicotiana tabacum*) flowers or 30-40 *Arabidopsis thaliana* flowers. Transfer them into 20 ml species-specific pollen germination medium in a 50-ml Falcon tube. Vortex vigorously 1 min to release the pollen grains into the medium and remove the anthers with forceps. Spin down the pollen grains at 2,500 rpm for 5 min at room temperature (RT) using free angle rotor. Remove the supernatant and resuspend the pollen grains with species-specific pollen germination medium (5 ml for lily or tobacco pollens in a 50-ml conical tube and 250-300  $\mu$ l for *Arabidopsis* pollens in a 2 ml Eppendorf tube).

Pollen tube germination condition:

Lily: 27.5 °C, 85 rpm/min shaker, 1.5-2.5 h;

Tobacco: 27.5 °C, 85 rpm/min shaker, 2-3 h;

*Arabidopsis*: 22.5 °C, water bath without shaking, 8-10 h.

2. Spin down the germinated pollen tubes at 1,000 rpm for 5 min at RT using free angle rotor.

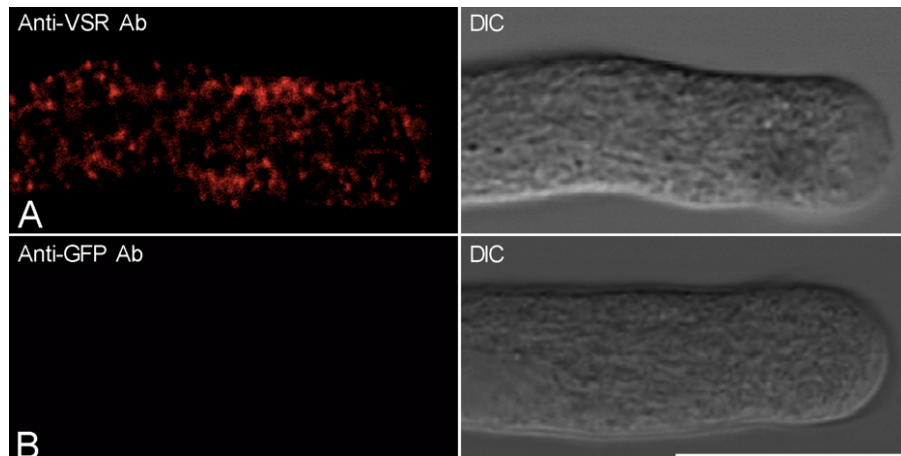
### **B. Pollen tube fixation and immunolabeling**

1. Fix germinated pollen tubes with 1% glutaraldehyde in germination medium for 15 min at RT, 60 rpm/min shaker.
2. Spin down the fixed pollen tubes at 1,000 rpm for 3 min at RT using free angle rotor. Sample washing procedure: Remove the supernatant and wash the pollen tubes by adding 2 ml pollen germination medium. Gently resuspend pollen tubes by mixing them in the medium by end-to-end rotating the tube by hands. Then keep the pollen tubes on bench undisturbed and wait for them naturally sink to the bottom of the tube at RT (repeat four times).

*Note: All the washing steps afterwards are performed as the same with step B2.*

3. Treat with 0.1% pectinase and 1% cellulase (prepared with 1x PBS) for 45 min at 28 °C (skip this step if immunolabel cell wall or cell wall associated proteins).
4. Wash three times with 1x PBS.

5. Transfer the pollen tubes to 10 ml of freshly prepared PBS containing 0.1% NaBH<sub>4</sub> at 4 °C overnight without disturbance.
6. Wash the cells twice by blocking buffer 1 (B1).
7. Block the cells by B1 for 45 min at RT.
8. Discard B1 and wash the cell with blocking buffer 2 (B2) once.
9. Add primary antibody (in B2) and incubate at 4 °C overnight (1:50 or 1:100 dilution for polyclonal antibody serum or 4 µg/ml for affinity-purified antibody).
10. Warm up the pollen tubes to RT and wash the cells with B2 twice. And then incubate pollen tubes with B2 for 30 min at RT without shaking.
11. Remove supernatant B2, add secondary antibody (Alexa 1:3,000 dilution in B2) and keep the samples undisturbed in the dark for 1 h at RT.
12. Wash the pollen tubes with B2 for three times and keep the samples in B2 in the dark without shaking (first time: 15 min, second time: 15 min, third time: 20 min).
13. Add about 150 µl sample cells in confocal dish for confocal observation. Figure 1 shows the representative confocal images showing the results of immunofluorescence labeling of tobacco pollen tubes with anti-VSR antibodies (Figure 1A) and control labeling using anti-GFP antibodies (Figure 1B). The confocal fluorescence images were collected using a Leica TCS SP8 system with the following parameters: 63x water objective, 2x zoom, 900 gain, 0 background, 0.168 µm pixel size, photomultiplier tubes (PMTs) detector. The images from pollen tubes labeled with antibodies were collected with a laser level of ≤3% to ensure that the fluorescence signal was within the linear range of detection (typically 0.5 or 1% laser was used).



**Figure 1.** Tobacco pollens were germinated for 2.5 h and subsequently fixed and immunolabeled with anti-VSR antibodies (A) and anti-GFP antibodies as a control (B). Scale bar=25 µm. DIC: differential interference contrast

## **Recipes**

### 1. Blocking buffer 1

1x PBS

1% BSA

Filter sterile, keep at 4 °C

### 2. Blocking buffer 2

1x PBS

0.25% BSA

0.25% gelatin

0.05% NP-40

0.02% azide

Filter sterile and keep at 4 °C

### 3. Pollen species-specific germination media and culture conditions

SPECIES	MEDIUM COMPOSITION
Lily ( <i>Lilium longiflorum</i> ) pollen grains	1.3 mM boric acid
	2.9 mM KNO <sub>3</sub>
	9.9 mM CaCl <sub>2</sub>
	10% (wt/vol) sucrose
	pH 5.8
Tobacco ( <i>Nicotiana tabacum</i> ) pollen grains	0.01% boric acid
	1 mM CaCl <sub>2</sub>
	1 mM Ca (NO <sub>3</sub> ) <sub>2</sub> ·4H <sub>2</sub> O
	1 mM MgSO <sub>4</sub> ·7H <sub>2</sub> O
	10% (wt/vol) sucrose
<i>Arabidopsis thaliana</i> pollen grains	pH 6.5
	0.01% boric acid
	5 mM KCl
	1 mM MgSO <sub>4</sub>
	5 mM CaCl <sub>2</sub>
	10% (wt/vol) sucrose
	pH 7.5

## **Acknowledgments**

The original version of this protocol was described in Wang *et al.* (2010). This work was

supported by grants from the Research Grants Council of Hong Kong (CUHK 466011, 465112, 466613 and CUHK2/CRF/11G) to L.J.

## References

1. Boavida, L. C. and McCormick, S. (2007). [TECHNICAL ADVANCE: Temperature as a determinant factor for increased and reproducible \*in vitro\* pollen germination in \*Arabidopsis thaliana\*](#). *Plant J* 52(3): 570-582.
2. Wang, H., Tse, Y. C., Law, A. H., Sun, S. S., Sun, Y. B., Xu, Z. F., Hillmer, S., Robinson, D. G. and Jiang, L. (2010). [Vacuolar sorting receptors \(VSRs\) and secretory carrier membrane proteins \(SCAMPs\) are essential for pollen tube growth](#). *Plant J* 61(5): 826-838.
3. Wang, H. and Jiang, L. (2011). [Transient expression and analysis of fluorescent reporter proteins in plant pollen tubes](#). *Nat Protoc* 6(4): 419-426.
4. Wang, H., Zhuang, X., Cai, Y., Cheung, A. Y. and Jiang, L. (2013). [Apical F-actin-regulated exocytic targeting of NtPPME1 is essential for construction and rigidity of the pollen tube cell wall](#). *Plant J* 76(3): 367-379.